

KTS 525 + ESI [tronic] Light



We are happy to launch New KTS 525 diagnostic tester with
Special ESI [tronic] light Software

Simple and Cost effective diagnostic solution for ECS, EM and Aftermarket car service workshop

KTS 525 -Hardware

- Hardware base from KTS 540
- Communications to the PC by USB interface or Bluetooth
- OBD exchange adapter – Interchangeable, Multiplex system
- Function temperature range 0 to 40 °C
- Power supply – via vehicle Battery (OBD), cigarette lighter, network component
- Full Pass- Thru (J2534) functionality enabled (ECU Flashing)
- Same functionality like KTS 540, but no Multimeter function
- Hardware will not have Oscilloscope and Multimeter function
- Software support – ESI[tronic] light



BOSCH

KTS 525 – Scope of Delivery

- Network component (15 V / 1 A)
- Network connecting cable
- OBD change adapter, exchangeable
- OBD diagnostic cable 1.5 m
- USB connecting cable, 3.0 m
- Bluetooth USB adapter
- Suitcase

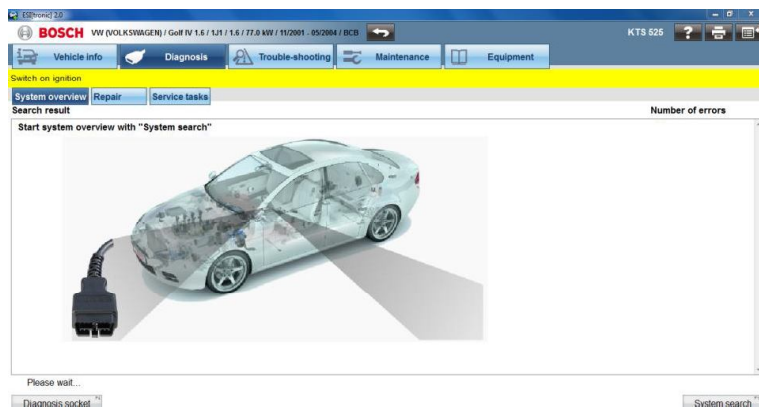


ESI [tronic] Light - Software

- ESI[tronic] light is a special licence of ESI[tronic] 2.0
- ESI[tronic] light is only running with KTS 525

Main functions enabled like

- Read and delete Error codes stored in ECU
- System Diagnosis (SD)
- Service Information system and trouble shooting option (SIS)
- Actual values available
- Service relevant function are available (Service View)



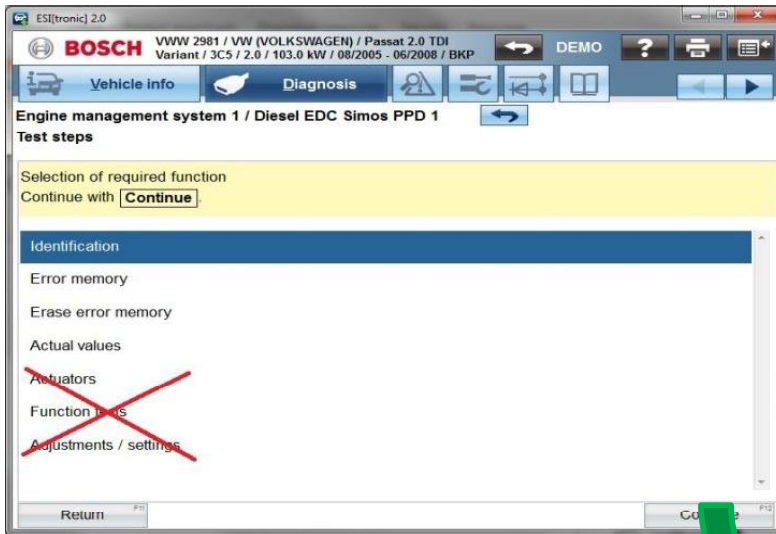
Exactly same user interface
as ESI[tronic] 2.0!



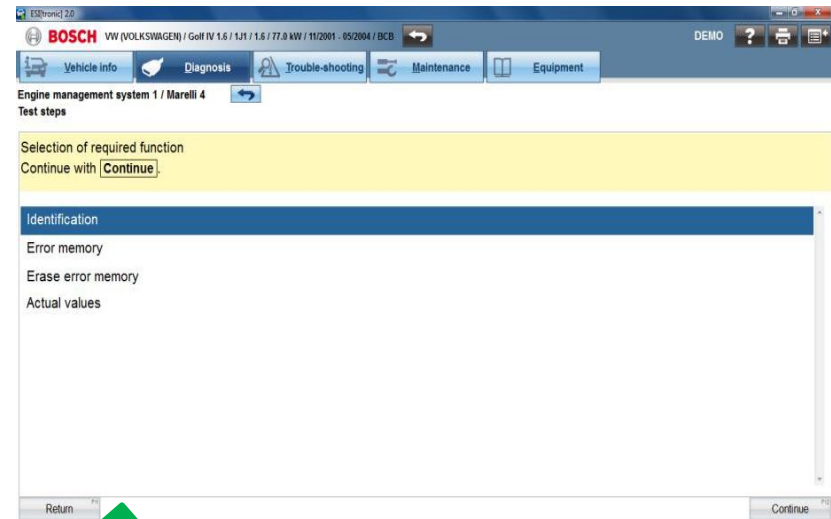
BOSCH

ESI[tronic] light – Functions Overview

ESI[tronic] 2.0



ESI[tronic] light



- Actuators
- Function Test
- Adjustments/Settings

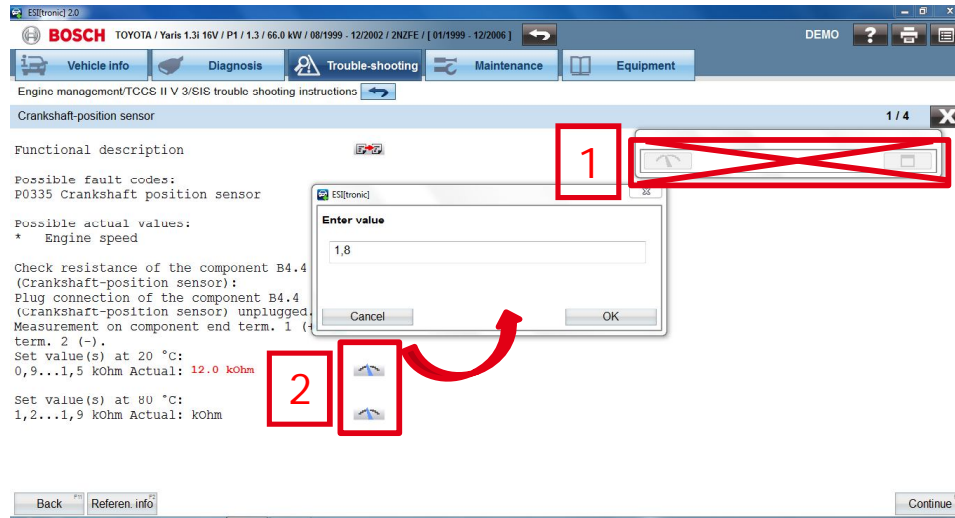


- Identification
- Error Memory
- Erase error memory
- Actual Values



BOSCH

ESI[tronic] light- Functions Overview Continue...



- Measurement button within SIS instructions not active 1
- But “Enter value” function for “set value(s)” available 2

