

Solar power supply system consists of solar panel, solar controller, battery and the inverter (optional). Solar energy is a clean renewable new energy, has no moving parts, no noise, no pollution, high reliability. It can provide reliable power to sensors or weather stations, mainly used for wireless sensor, automatic test station, automatic weather stations and other power supply.

FEATURES

- Controller automatic identification 12VDC/24VDC
- Key operation, automatic save settings parameters, low standby power consumption
- high charging efficiency
- 4 work modes optional: normally open, light mode, light and time mode, manual mode
- With battery under-voltage, over-voltage, output overload, short circuit, battery or solar panels reverse connect protection function etc.
- Fault code instructions
- Waterproof grade IP67

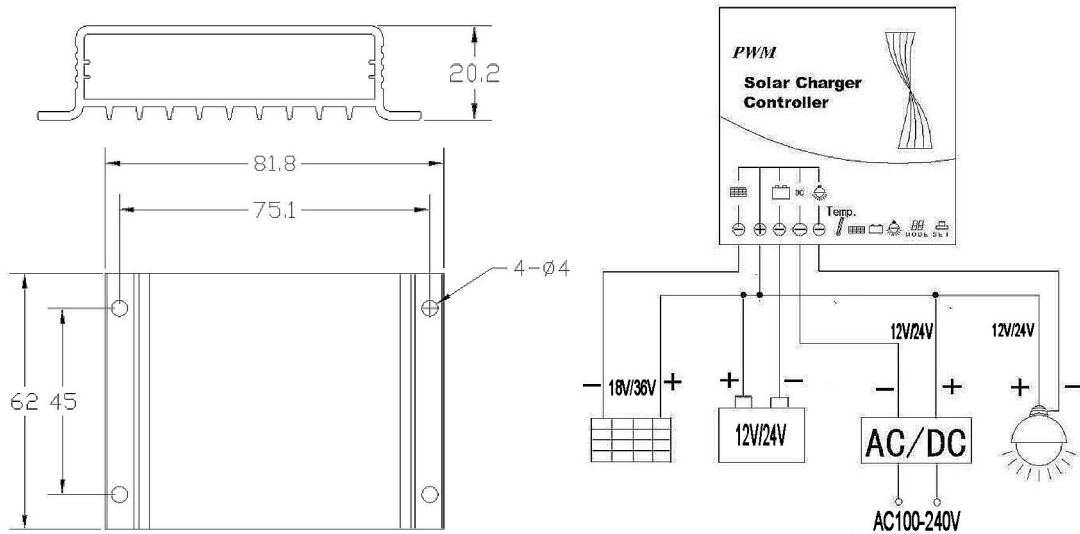


SPECIFICATIONS

Item	Technical parameters	
Rated current	10A	
Rated voltage(self-adaption)	12V	24V
Solar panel voltage	18V	36V
Start voltage	7V	14V
Shutoff voltage	3V	6V
Float charging voltage	13.8V	27.6V
Boost charging voltage	14.8V	29.6V
Equalizing charging voltage	14.4V	28.8V
Over voltage protection	16.5V	33.0V
Over voltage recovery	15.0V	30.0V
Under voltage protection	10.8V	21.6V
Under voltage recovery	12.8V	25.6V
Commercial power start voltage ^①	≤10.8V	≤21.6V
Commercial power shutoff voltage	≥12.8V	≥25.6V
Circuit protection	Overload, short protection	
No-load current	≤12mA@12V	
Ingress Protection	IP67	
Working temperature	-40℃~+70℃	
Dimension	81.0*62.0*20.0mm	

CON ^①Controller cannot be directly connected to the AC110V/AC220V,the AC must be converted to DC(12V/24V),then connect to the controller.

Unit:mm



WORK MODE

The controller has 4 work modes:

- Light & time control: Mode=1-15: When there is no sunlight start the load, time control shutoff(1-15 hours);
- Light control Mode=16: When there is no sunlight start the load, when the light appear, shut down load;
- Normally open Mode=17: Keep the output state 24 hours a day;
- Manual mode Mode=18: Manual mode.


Press the button for 5 s, digital tube start flashing, product into regulating mode, loosen the button, each time you press the button, the number will increase, and the set up, about 5 s digital tube stop flashing, exit mode Settings.

TYPICAL APPLICATIONS

Application scope	Single wireless(WIFI,GPRS,Lora, etc.) sensor	RK160-02,RK200-05 or RK400-03	RK900-01
Solar panel	5Wp@18V	10Wp@18V	30Wp@18V
	240*230*17mm	295*295*20mm	520*420*25mm
Controller	10A@12V/24V	10A@12V/24V	10A@12V/24V
	81*62*20mm	81*62*20mm	81*62*20mm
Lead-acid battery	7AH@12V	12AH@12V	20AH@12V
	151*65*94mm	151*98*95mm	181*76*165mm
Protection box	Customized	Customized	Customized
Cable	RVV2*0.5	RVV2*0.75	RVV2*0.75

Note:

- 1.Suggest user to ready battery, because the battery is not convenient to transport;
- 2.The size of the protective box according to the project need to customize;
- 3.Cable length can be customized.

 Complies with applicable CE directives.

Specifications subject to change without notice. Version 1.0

Copyright © 2015 Hunan Rika Electronic Technology Co.,Ltd

Hunan Rika Electronic Technology Co., Ltd

Add:No 499# of Yingxin Road,
Yuhua District,Changsha,
Hunan,China



+86-731-85132979



info@rikasensor.com



www.rikasensor.com.cn