

Multi Auto Pilot Navigation System SAS-70

NMEA 2000 Interface
Multi Talker-Multi Listener



12 12
NORTH UP RM
PORT X-CHANG
EOLINE 112
EXCHG
TR OFF
ES OFF
EAW OFF

SAS-70 Auto Pilot is a multiple display enables diffused navigation data to integrate and also adequate for yacht and small boat by using wire/wireless remote.

NEW



Multi Auto Pilot Navigation System

SAS-70+SM-975

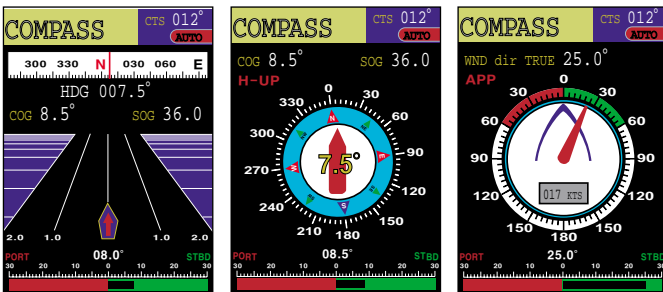
Features

- ◆ High contrast 5.6" colour TFT LCD
- ◆ NMEA 2000 interface / Multi Talker-Multi Listener
- ◆ Various navigation data displays in one screen and it improves the concentration of auto steering
- ◆ Wide range of applications is easily available by data line sharing (Water Depth/Temperature, Vessel Speed, Fuel Gage, Wind Direction/Speed Unit, AIS, Remote Control and so on.)
- ◆ Simply to connect existing Auto Pilot System
- ◆ Available on auto navigation interfacing with GPS Plotter

Specifications

• Display	5.6" color TFT LCD
• Power	11~36VDC
• Power Consumption	Max. 15W
• Heading Angle Resolution	0.5° (Electronic Compass)
• Direction Setting Resolution	1°
• Temperature	-15°C ~ +55°C

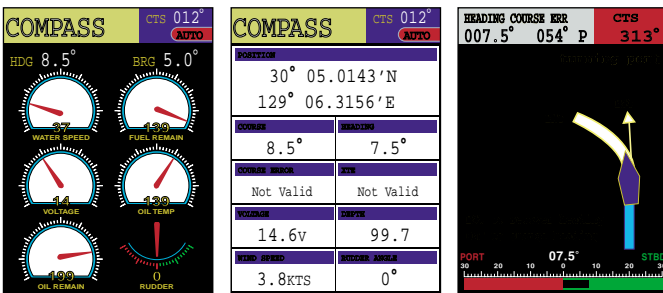
Display Type



▲ High-Way

▲ Compass

▲ Wind



▲ Analog Gauge

▲ Data

▲ Dodge

Components

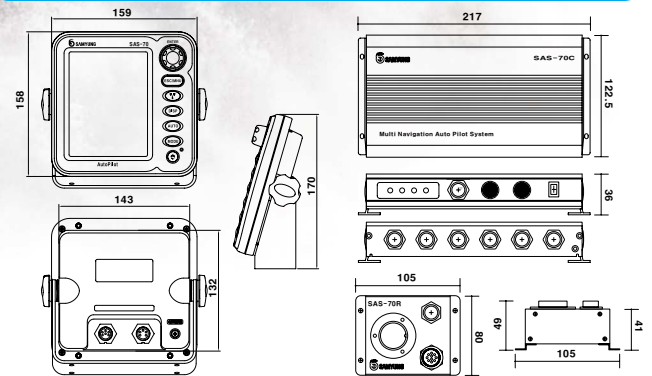
Standard

- SAS-70
 - Display unit(SAS-70D)
 - Control unit(SAS-70C)
 - Remote connecting unit(SAS-70R)
 - Electronic compass(ES-95)
 - Angle sensor(FS-80)
 - Solenoid(SV-20A)
 - Wire remote controller(RC-10)
- SM-975
 - Electronic lever (SM-975)
 - Wire remote (RC-30)

Optional

- Wireless remote controller
- GPS plotter
- Oil pump(SOP-02), Cylinder, Oil, Hose
- Various sensor

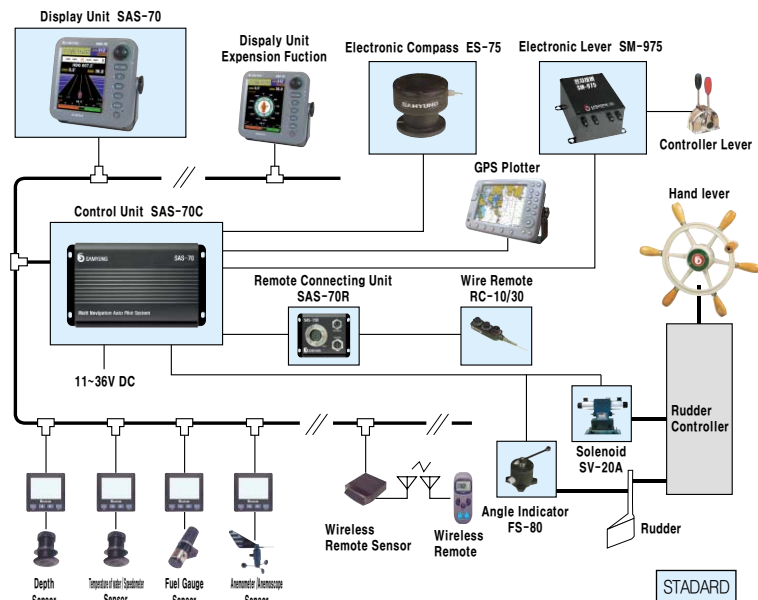
Dimensions



▲ Display Unit(SAS-70D)

▲ Control unit(SAS-70C)
Remote connecting Unit(SAS-70R)

Configuration



* Specification is subject to change without pre-notice



Head Office : 1123-17, Dongsam-Dong, Youngdo-Gu, Busan, Korea, 606-083
 Tel : 82-51-601-5530(Rep.) Fax : 82-51-413-4446
A/S Center : 65-20, 2-Ga Namhang-Dong, Yungdo-Gu, Busan, Korea, 606-032
 Tel : 82-51-601-5570~4(Rep.) Fax : 82-51-416-5515
 Http : //www.samyungenc.com



ISO 9001:2000 / KS A 9001:2001
 Certificate No. : RQM0645

