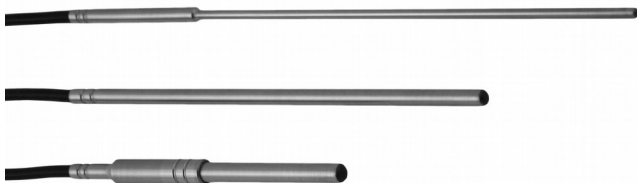


Product Information

Temperature probe

**Temperature Probe
GTF 101 P**



- Pt100, Pt1000
- With cable sleeve and cable (loose ends)
- Very robust

Characteristics

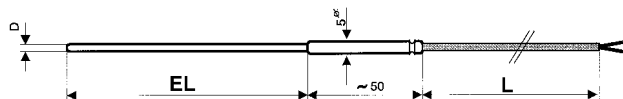
The GTF 101 is a temperature probe modified completely according to customer specifications. The GTF 101 is very robust and therefore especially suited for application at high permanent temperatures in air, gases liquids or aggressive environments.

The measurement is done by means of resistance temperature sensors (Pt100 or Pt1000)

Technical data

- Sensor element** : Pt100 (2- / 3- or 4-wire)
Pt1000 (2- / 3- or 4-wire)
- Measuring range MB**
- MB 1 : -50..+400 °C
 - MB 2 : -200..+400 °C
 - MB 3 : -200..+600 °C
 - MB 4 : -50..+850 °C
- Probe diameter D** : 3 mm, 4 mm, 5 mm, 6 mm, 8 mm
other diameters (e.g. 1.6 mm, 2.2 mm) upon request
- Fitting length EL** : 50 mm, 100 mm, 150 mm, 250 mm,
500 mm, 1000 mm, 1500 mm
other fitting lengths possible
- Cable sleeve** : **for probe diameter D 3 mm, 4 mm, 5 mm, 6 mm, 8 mm:**
cable sleeve Ø 5 mm x 50 mm additional to fitting length
for probe diameter D 6 mm and MB3 or MB4:
cable sleeve Ø 8 mm x 35 mm and diminution Ø 5 mm x 17 mm additional to fitting length
- Note:** : The temperature of the cable sleeve must not exceed the permitted temperature of the cable
- Accuracy** : DIN class B, DIN class A, 1/3 DIN class B, 1/10 DIN class B
- Tube material** : V4A
- Cable** : 1 m (standard), loose ends
- PVC cable : up to max. 105 °C
 - Silicone cable : up to max. 200 °C (standard)
 - Teflon cable : up to max. 250 °C
 - Glass silk cable : up to max. 400 °C

Dimensions



Ordering code

GTF101P - 1. - 2. - 3. - 4. - 5. - 6. - 7. - 8.

1. Sensor element		
P	Pt100	
T	Pt1000	
2. Connection of sensor element		
2L	2-wire	
3L	3-wire	
4L	4-wire	
3. Accuracy		
A	DIN class A	only with MB1
B	DIN class B (Standard)	
D	1/3 DIN class B	only with MB1, MB2, MB3
Z	1/10 DIN class B	only with MB1 and Pt100
4. Measuring range MB		
MB1	-50..+400 °C	
MB2	-200..+400 °C	
MB3	-70..+600 °C	
MB4	-50..+850 °C	only with Pt100
5. Probe diameter D		
D30	3.0 mm	
D40	4.0 mm	
D50	5.0 mm	
D60	6.0 mm	
D80	8.0 mm	not with MB4
Dxx	other Ø in mm (upon request)	
6. Fitting length EL		
0050	50 mm	
0100	100 mm	
0150	150 mm	
0250	250 mm	
0500	500 mm	
1000	1000 mm	
1500	1500 mm	
xxxx	any EL in mm (e.g.: 0700 = 700 mm)	
7. Cable length L		
L01	1 m (standard)	
Lxx	desired length in m (e.g. L03 = 3 m)	
8. Cable material		
P	PVC cable up to max. 105 °C	
S	silicone cable up to max. 200 °C (standard)	
T	Teflon cable up to max. 250 °C	
G	glass silk cable up to max. 400 °C	

Product Information

Temperature probe

**Temperatur Probe
GTF 101 P-OKH**



- Pt100, Pt1000
- With cable (loose ends)
- Very robust

Characteristics

The GTF 101 is a temperature probe modified completely according to customer specifications. The GTF 101 is very robust and therefore especially suited for application at high permanent temperatures in air, gases liquids or aggressive environments.

The measurement is done by means of resistance temperature sensors (Pt100 or Pt1000)

Technical data

- Sensor element** : Pt100 (2- / 3- or 4-wire)
Pt1000 (2- / 3- or 4-wire)
- Measuring range MB**
- MB 1 : -50..+200 °C
 - MB 2 : -50..+250 °C
 - MB 3 : -50..+400 °C
 - MB 4 : -200..+250 °C
- Probe diameter D** : 3 mm, 4 mm, 5 mm, 6 mm, 8 mm
other diameters upon request
- Fitting length EL** : 50 mm, 100 mm, 150 mm, 250 mm,
500 mm, 1000 mm, 1500 mm
other fitting lengths possible
- Accuracy** : DIN class B, DIN class A,
1/3 DIN class B, 1/10 DIN class B
- Tube material** : V4A
- Cable** : 1 m (standard), loose ends
- Silicone cable : up to max. 200 °C (standard)
 - Teflon cable : up to max. 250 °C
 - Glass silk cable : up to max. 400 °C

Ordering code

GTF101P-OKH - - - - - - - -

1. Sensor element	
P	Pt100
T	Pt1000
2. Connection of sensor element	
2L	2-wire
3L	3-wire
4L	4-wire
3. Accuracy	
A	DIN class A
B	DIN class B (Standard)
D	1/3 DIN class B
Z	1/10 DIN class B <i>only with Pt100</i>
4. Measuring range MB	
MB1	-50..+200 °C
MB2	-50..+250 °C <i>only with Teflon or glass silk cable</i>
MB3	-50..+400 °C <i>only with glass silk cable</i>
MB4	-200..+250 °C <i>only with Teflon cable</i>
5. Probe diameter D	
D30	3.0 mm <i>only with Teflon cable</i>
D40	4.0 mm <i>only with Teflon cable</i>
D50	5.0 mm
D60	6.0 mm
D80	8.0 mm
Dxx	other Ø in mm (upon request)
6. Fitting length EL	
0050	50 mm
0100	100 mm
0150	150 mm
0250	250 mm
0500	500 mm
1000	1000 mm
1500	1500 mm
xxxx	any EL in mm (e.g.: 0700 = 700 mm)
7. Cable length L	
L01	1 m (standard)
Lxx	desired length in m (e.g. L03 = 3 m)
8. Cable material	
S	silicone cable up to max. 200 °C (standard)
T	Teflon cable up to max. 250 °C
G	glass silk cable up to max. 400 °C

Dimensions

