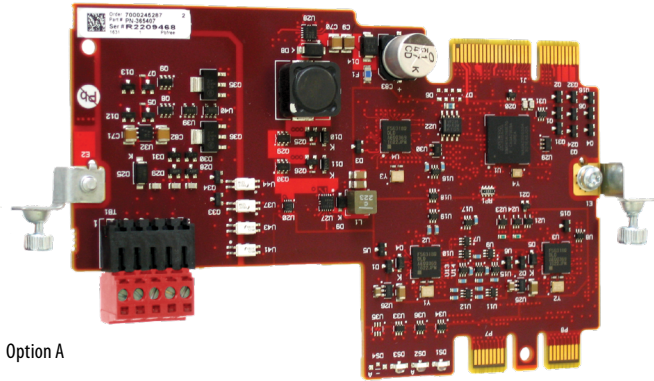


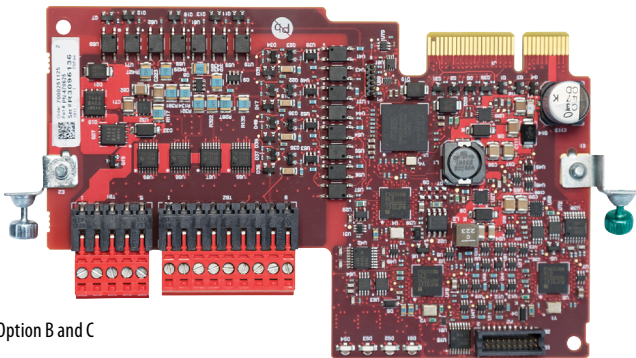


## Safety Options

This on-machine drive offers safety options that not only help protect your people and equipment but also enable reduced downtime. This functionality offers the benefit of quick startup after a demand on the safety system. Choose the safety option that best meets your application needs.



Option A



Option B and C

Safe Torque Off (option A in catalog string) is ideal for safety-related applications that benefit from removal of rotational power to the motor without removing power from the drive. This hardwired or EtherNet/IP networked solution provides safety ratings up to and including SIL 3, PLe and CAT 3. Option module shown at left.

Integrated Safety Functions (options B and C in catalog string) is a networked-only option that provides drive safety on EtherNet/IP. Option module is shown at left.

For Integrated Safety Functions, the drive-based safety instruction is:

- STO – Safe Torque Off

Controller-based safety instructions include:

- SFX – Safety Feedback Interface
- SS1 – Safe Stop 1
- SS2 – Safe Stop 2
- SOS – Safe Operational Stop
- SLS – Safely-limited Speed
- SLP – Safely-limited Position
- SDI – Safe Direction
- SBC – Safe Brake Control

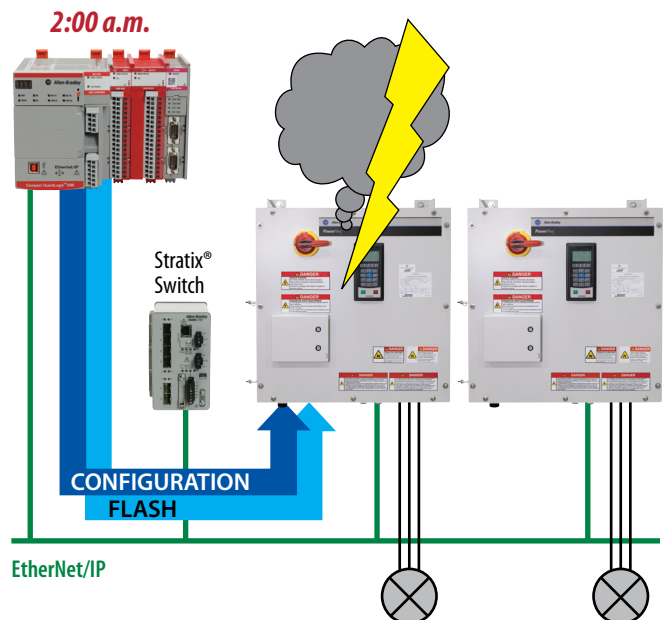
When used as part of an integrated safety system that includes a GuardLogix® 5580ES controller or Compact GuardLogix 5380ES controller, integrated safety functions (option B and C) provide safety ratings up to and including SIL 3 and PLe Cat 4. Studio 5000 Logix Designer® application version 31 or later is also required.

## Premier Integration

The PowerFlex 755 On-machine Drive offers seamless integration into the Logix environment for simplified and enhanced configuration, programming, commissioning, diagnostics and maintenance. Using Add-on Profiles, you'll be able to reduce engineering time - and related costs - while improving the configuration, control and collection of data.

To further simplify your drive and controller set-up, the PowerFlex 755 drive offers the option to use Studio 5000® integrated motion instructions to help speed up programming. This allows you to configure and program both variable-frequency drives and servo drives using the same motion instructions in the Studio 5000 environment.

Automatic Device Configuration is another productivity-enhancing feature available within Studio 5000. Now, the Logix controller can automatically detect a replaced PowerFlex 755 drive and download all configuration parameters. This eliminates the need for manual reconfiguration.



# Catalog Number Explanation

Build the catalog string that provides the features and options your application needs.

1...3 4 5 6 7 8...10 11 12 13 14 15 16 17 18 19 20 21 22 23  
 26G 1 1 F D 022 J A 4 N N N N A -M1 -IN1 -SB -E41 -E51  
 a b c d e f g h i j k l m n o p q r s

### a

Drive	
Code	Type
26G	PowerFlex 755

### b

Future Use	
Code	Description
1	Future Use

### c

Input Type	
Code	Description
1	AC input with precharge, includes DC terminals

### d

Enclosure Type	
Code	Type
F	UL Type 12 / IP66 (indoor use only)

### e

Voltage Rating Class	
Code	Type
C	400V AC, 50 Hz
D	480V AC, 60 Hz

### f

Normal Duty Drive Rating @ 400V AC, 50 Hz			
Code	Amps	kW	Frame
8P7	8.7	4	2
011	11.5	5.5	2
015	15.4	7.5	2
022	22.0	11	2

Normal Duty Drive Rating @ 480V AC, 60 Hz			
Code	Amps	Hp	Frame
8P0	8.0	5	2
011	11.0	7.5	2
014	14.0	10	2
022 <sup>(1)</sup>	22.0 / 14.0	15 / 10	2

- (1) Option 022 for 22A, 15HP, Normal Duty with induction motor or Allen-Bradley servo motor. Option 022 for 14A, 10HP, Heavy Duty with servo motor only.

### g

Filtering and Common Mode Cap Configuration		
Code	Filtering	Default Connection
J	Yes	Jumper installed

### h

Dynamic Braking (internal to drive)		
Code	Resistor	Transistor
A	No	Yes

### i

Cover Mounted HIM	
Code	Type
4	UL Type 4X / IP66

### j, k, l, m

Future Use	
Code	Description
N	Future Use

### n

Safety Option Module - Slot 6	
Code	Type
A	Network Integrated Safe Torque Off Module (STO) S3
B <sup>(1)(2)(3)</sup>	Network Integrated Safety Function (SSM) S4
C <sup>(1)(2)(4)</sup>	Network Integrated Safety Function with Brake Control (S4)
N	None

- (1) Integrated Safety Function option module requires Studio 5000 V31.00 or higher firmware with Guard Logix 5580 or Compact GuardLogix 5380 controllers for drive safety functions.  
 (2) Options B and C require, at a minimum, selection of one of the following options: E42, E43, E44, E51, E52, E53, E55, E56.  
 (3) Option B provides two customer safety inputs, S0 and S1.  
 (4) Option C uses the safety output S0 to provide control power to the brake circuit and provides one customer input S1. The S0 input is used internally to monitor the status of the brake contactor.

### o

Motor Type	
Code	Motor
M1	Induction motor
M2 <sup>(1)(2)</sup>	Allen-Bradley MPL, MPM servo motor, for use with 14 AWG or 16 AWG motor cable
M3 <sup>(2)(3)</sup>	Allen-Bradley MPL, MPM servo motor, for use with 10 AWG motor cable

- (1) Option M2 selected with Drive Rating 022 configures the drive for Heavy Duty (HD) rating.  
 (2) M2 and M3 are only available in 480V AC / 60 Hz.  
 (3) Option M3 for use with Drive Rating 022 only.

### p

Connector - AC Input Power and Control		
Code	Input Size / Type	Control Size / Type
IN1	M35 Allen-Bradley, 4-pin male	Mini, 4-pin, male
IN2	Future use	Mini, 4-pin, male

### q

Brake Control Options	
Code	Brake Control <sup>(1)</sup>
SB	400/480V AC source brake, M24 output receptacle, 3-pin female. No additional connector for brake
B2	24V DC brake, M24 output receptacle, 3-pin female with 24V DC auxiliary power input, mini 4-pin, male
B3	24V DC brake + servo motor output, M40 or M23 output receptacle, 6-pin, female with 24V DC auxiliary power input, mini 4-pin male

- (1) Options SB and B2 are for use with AC induction motors. Option B3 is for use with Allen-Bradley MPM and MPL servo motors.

### r

Encoder Type - Slot 4		
Code	Type <sup>(1)</sup>	Receptacle
E41	Incremental HTL, 12V DC	M23, Female, 12-Pin, 20° Coded
E42	Hiperface SC	M23, Female, 12-pin, 20° Coded
E43	SSI SC Rotary	M23, Female, 12-pin, 20° Coded
E44 <sup>(2)</sup>	Dual Incremental HTL, 12V DC	M23 (qty. 2), Female, 12-pin, 20° Coded
N	None (Future Use)	None (Future Use)

- (1) Option E41 is for use with the AC induction motors only. Option E42, E43, and E44 are for use with the AC induction and Allen-Bradley servo-motors.  
 (2) Option E44 on-board P3 jumper is set to provide feedback to an SSM Safety Option Module.

### s

Encoder Type - Slot 5		
Code	Type <sup>(1)</sup>	Receptacle
E51	Hiperface SC	M23, Female, 12-pin, 20° Coded
E52	Hiperface SC	AB servo motor bulk head
E53	Hiperface SC + SSI Linear	M23 (qty. 2), Female, 12-pin, 20° Coded
E54	SSI Linear	M23, Female, 12-pin, 20° Coded
E55	Hiperface SC + SSI Linear	AB servo motor bulk head + M23, Female, 12-pin, 20° Coded
E56	SSI SC Rotary	M23, Female, 12-pin, 20° Coded
N	None	None

- (1) Option E51, E53, E54, and E56 are for use with AC induction motors. Option E52 and E55 are for use with Allen-Bradley servo motors.

## Product Specifications

- 400V AC, 3-phase, 50 Hz normal duty ratings:
  - 8.7 A – 22 A; 4 kW – 11 kW\*
- 480V AC, 3-phase, 60 Hz normal duty ratings:
  - 8 A – 14 A; 5 Hp – 10 Hp\*
  - 22 A, 15 Hp (14 A, 10 Hp heavy duty when Motor Type = M2 selected)
- AC induction motor or servo motor\*\* control
- Safety options:
  - Networked or hardwired Safe Torque Off
  - Networked Integrated Safety Functions
  - None
- Encoder feedback options:
  - Incremental HTL 12V DC
  - Dual Incremental 12V DC
  - SSI SC Rotary Absolute
  - SSI Linear Absolute
  - Hiperface SC
  - Hiperface SC + SSI Linear

- Enclosure Type: IP66 / UL Type 12
- 65kA SCCR
- Ambient operating temperature: 0-40° C (32-104° F)
- Compatibility with ArmorConnect® cable media
- Multi-language product labels including English, Chinese, French, German, Portuguese, Romanian and Spanish
- DeviceLogix™ control provides built-in drive capability to process logic locally and reduce demands on the controller and network

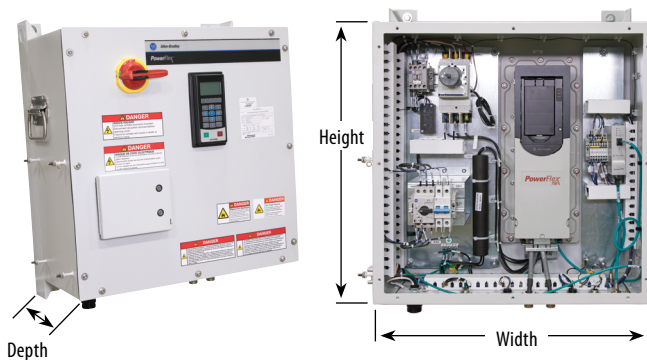
\* For additional power ratings, contact Rockwell Automation.

\*\* Allen-Bradley permanent magnet servo motor. Ask about availability.

## Product Dimensions

Width	Depth	Height
649.8 (25.58)	391.9 (15.43)	711.2 (28.0)

Enclosure dimensions without mounting hardware in mm (inches)







## Certifications

- c-UL-us, CE, RoHS, RCM, KCC
  - TÜV Rheinland Functional Safety – Certification applies to 20-750-S3 and 20-750-S4 safety options when installed in drive
- See a complete list of certifications in publication 750-TD003

Standard components on every packaged drive include:

- PowerFlex 755 flange-mount AC drive
- Branch circuit breaker with lockable through-cover rotary disconnect
- Control power and motor brake circuit breakers accessible via auxiliary circuit breaker door
- Front-mounted Human Interface Module (HIM) with enhanced LCD display and full numeric keypad
- Built-in dual M12 EtherNet/IP ports for linear, star or DLR network configurations
- Quick connect receptacles for all your connections
- Four customer programmable digital inputs
- Dynamic brake thermostat input
- Brake contactor
- EMC filter
- Common mode input core as required for CE installations
- Common mode output core (in induction motor versions)
- Four collar studs for mounting of customer supplied equipment
- Lifting handles
- Hoist lifting/mounting brackets

Connect with us.    

rockwellautomation.com

expanding human possibility™

AMERICAS: Rockwell Automation, 1201 South Second Street, Milwaukee, WI 53204-2496 USA, Tel: (1) 414.382.2000, Fax: (1) 414.382.4444

EUROPE/MIDDLE EAST/AFRICA: Rockwell Automation NV, Pegasus Park, De Kleetlaan 12a, 1831 Diegem, Belgium, Tel: (32) 2 663 0600, Fax: (32) 2 663 0640

ASIA PACIFIC: Rockwell Automation, Level 14, Core F, Cyberport 3, 100 Cyberport Road, Hong Kong, Tel: (852) 2887 4788, Fax: (852) 2508 1846

ArmorConnect, DeviceLogix, GuardLogix, On-machine, PowerFlex, Rockwell Automation and Studio 5000 are trademarks of Rockwell Automation, Inc.

EtherNet/IP is a trademark of the ODVA, Inc. Trademarks not belonging to Rockwell Automation are property of their respective companies.