

For a more reliable, cost-efficient cell culture lab



# CellXpert® C170 CO<sub>2</sub> Incubator

## CellXpert – the new family of CO<sub>2</sub> Incubators from Eppendorf

Are you looking for a 170 L class CO<sub>2</sub> incubator that makes cleaning easy, provides reliable contamination protection and delivers optimized growth conditions? How about a CO<sub>2</sub> incubator that can also save you money and is ready for the future of your cell culture lab? Discover the CellXpert C170, the more economical, basic version of the C170i.

### Optimized growth conditions for more reproducible results

- > Fast temperature and CO<sub>2</sub> recovery in less than 5 min after door opening, with no setpoint overshoot
- > Fanless design for optimized vibration and air turbulence protection
- > Temperature homogeneity verified at 27 spots inside

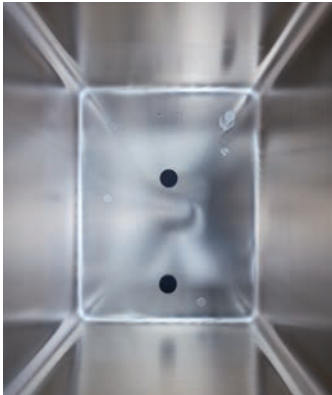
### Easy cleaning and reliable contamination prevention

- > Seamless chamber
- > Fanless design
- > 140 °C disinfection
- > Option for 4-segmented inner doors
- > Copper kit for critical parts available (water tray and shelves)

### Save time, money, and lab space

- > Up to 25% more usable space
- > No internal expendable parts like fan-associated HEPA-filters or UV-lamps that require maintenance and replacement
- > Significantly reduced CO<sub>2</sub> consumption compared to other devices in the market

# Make the Most of Your Lab



## Easy cleaning and disinfection

Disassemble the chamber components within 40 seconds, quickly wipe the seamless chamber, and simply start the 140 °C disinfection.

**Video:** [Easy cleaning and reliable contamination prevention](#)

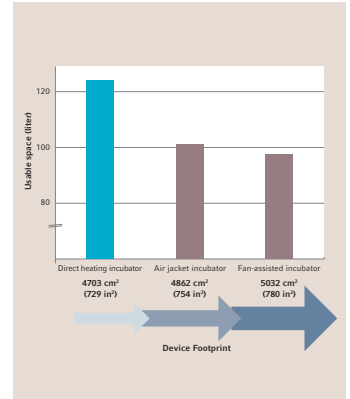


## Stack it your way

Cell culture lab space is precious. With the Universal Stacking Kit, you can stack your CellXpert C170 underneath other CO<sub>2</sub> incubators including models from Thermo Scientific®, PHCbi (formerly Panasonic®), or BINDER®.

## Vibration and turbulence protection – no fan

Ever experienced cell growth variations between different shelves, especially between the top shelf and others? The fanless design helps to protect your cells from vibrations and air turbulences that can disrupt the protective micro-atmosphere above the medium.



## Up to 25% more usable space saves lab space

The fanless design omits the need for additional interior parts or structures like fans, air ducts, HEPA-filters, water-jacket etc. – for more space inside.

**White Paper:** [How to save money and lab space with the CellXpert](#)



## CellXpert C170i or C170 – What is the best choice for your needs?

If you require future flexibility, O<sub>2</sub> control, copper chamber, humidity monitoring, advanced documentation, user management, or if you have a requirement for 180 °C disinfection – the CellXpert C170i is recommended. [Compare the CellXpert C170i with the C170](#)

How do you ensure optimal cell growth conditions in your incubators? Monitor your incubators from anywhere with VisioNize® Lab Suite and track all related device parameters such as temperature, O<sub>2</sub> and CO<sub>2</sub>.

[Find out more!](#)

Your local distributor: [www.eppendorf.com/contact](http://www.eppendorf.com/contact)  
Eppendorf SE · Barkhausenweg 1 · 22339 Hamburg · Germany  
[eppendorf@eppendorf.com](mailto:eppendorf@eppendorf.com) · [www.eppendorf.com](http://www.eppendorf.com)

[www.eppendorf.com/co2-incubators](http://www.eppendorf.com/co2-incubators)