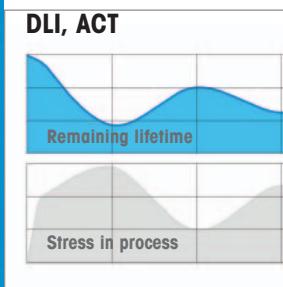
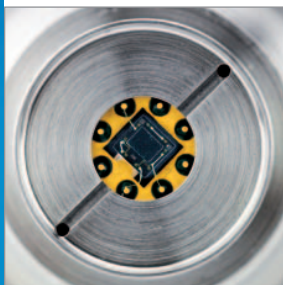


Thermal Conductivity CO₂ Sensor Proven, Intelligent, Convenient



Proven technology

- Improved thermal conductivity technique for greater accuracy and low drift
- Immunity to background gases results in high CO₂ selectivity
- High comparability with established reference methods

Predictive maintenance

- Dynamic Lifetime Indicator detects when membrane replacement will be required
- Adaptive Calibration Timer predicts when calibration should be performed

Convenient

- Simple maintenance with hygienic membrane cap design
- Installation with Varivent™, Tri-Clamp® and 28 mm/M42 socket process connections
- Plug and Measure for fast start up
- Easy in-line calibration

Durable

- Warning of falling membrane integrity protects measurement chip
- No moving parts for reduced failure rate and higher operational uptime
- Automatic sensor protection in event of purge gas failure and during CIP/SIP cycles



Intelligent CO₂ Measuring System Less maintenance – greater reliability

InPro 5500 i has been developed for in-line CO₂ measurements in brewery and carbonated soft drink processes. The sensor utilizes the well-proven thermal conductivity method to determine CO₂ in liquids. METTLER TOLEDO has combined this technology with the simplified handling and predictive diagnostics features of the unique Intelligent Sensor Management (ISM) concept.

ISM's pre-calibration and Plug and Measure functions ensure fast, error-free measurement point start up. The Dynamic Lifetime Indicator and the Adaptive Calibration Timer enable predictive maintenance planning to keep the sensor at peak performance at all times.

The InPro 5500 i will help breweries and carbonated soft drink producers maintain product quality and control CO₂ costs by providing accurate in-line measurements in CO₂ critical processes.

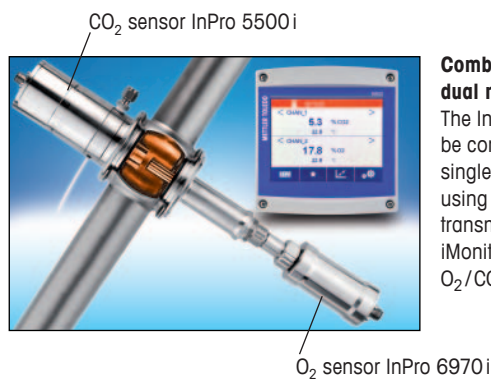
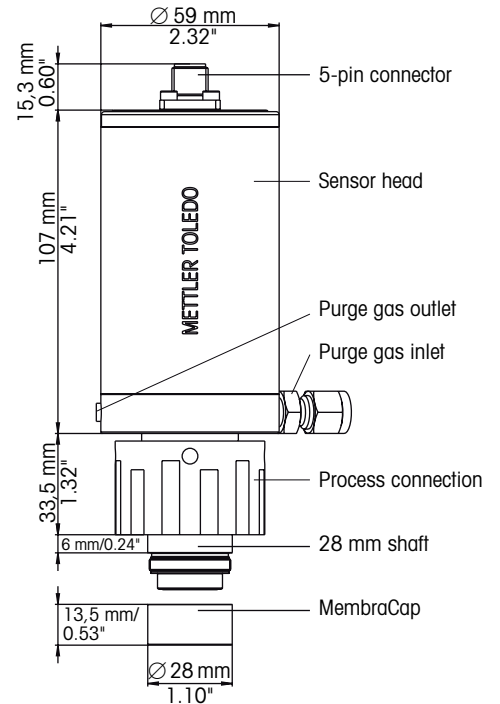
Technical data of the InPro 5500 i

Measurement range	0 ... 15 g/L CO ₂
Accuracy	± 1 % (within ± 5 °C of calibration temperature)
Operating temperature	0 ... 50 °C (32 ... 122 °F)
Mechanical temperature resistance	- 5 ... 121 °C (23 ... 250 °F)
Operating pressure	0 ... 20 bar (0 ... 290 psi)
Mechanical pressure resistance	Max. 20 bar (290 psi)
Cable connection	RS485; 5-pin
CO ₂ selective membrane material	PTFE/Silicone/PTFE (steel reinforced)
Available process connections	Varivent™ Type N Tri-Clamp® 2" 28 mm with cap nut M42
Certificates	MaxCert™ package (material certificate 3.1, surface finish certificate 2.1, final inspection certificate)
Measurement cycle	< 20 s

► www.mt.com/InPro5500i

Additional information

Designation	Compatible transmitter
InPro 5500 i	M400 Type 3
	M800



Combined O₂/CO₂ multi-channel dual measurement loop

The InPro 5500 i sensor can be combined with an M400 for a single loop or with an O₂ sensor using the M800 multi-channel transmitter with its intuitive iMonitor for a complete dual O₂/CO₂ loop.

Process connection compatibility

Varivent™, Tri-Clamp® and 28 mm/M42 process connections, plus the integrated temperature sensor for more accurate CO₂ measurement, means commissioning is quick and straightforward. The hygienic membrane cap has been designed for ease of cleanability and simple, quick exchange.

www.mt.com/pro

For more information

Mettler-Toledo AG
Process Analytics
8902 Urdorf, Switzerland
Phone +41 44 729 62 11
Fax +41 44 729 66 36



Management System
certified according to
ISO 9001 / ISO 14001

Subject to technical changes.
©07/2012 Mettler-Toledo AG.
Printed in Switzerland. 30 035 329

Sales and service: