

**Analysis System**  
**QUANTIZ®**  
**QUANTIZ® Light**

**Combination of  
hard- and software,  
especially for  
image capture and  
image analysis at  
corrosion tests**

**Scribe delamination  
Edge corrosion  
Corrosion on the surface**



Fig. QUANTIZ®



Fig. QUANTIZ® Light

testing equipment for quality management



**Technical Description**

**Surface Analysis  
System**

## Purpose and Application

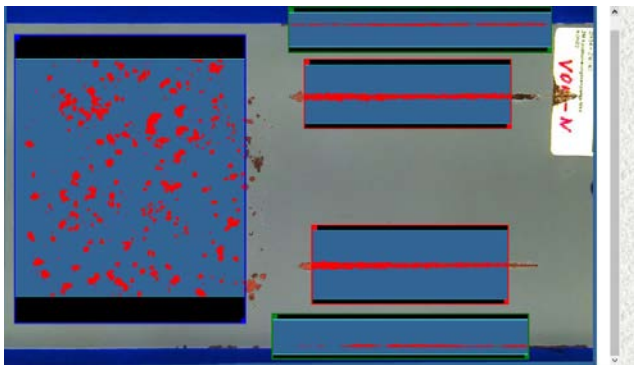
The Analysis System **QUANTIZ®** and **QUANTIZ® Light** are a combination of hardware and software, especially for the automatic evaluation and documentation of various corrosion samples; connectable via USB cable to standard laptops / PCs (must be provided by the user).

## Principle of the Test

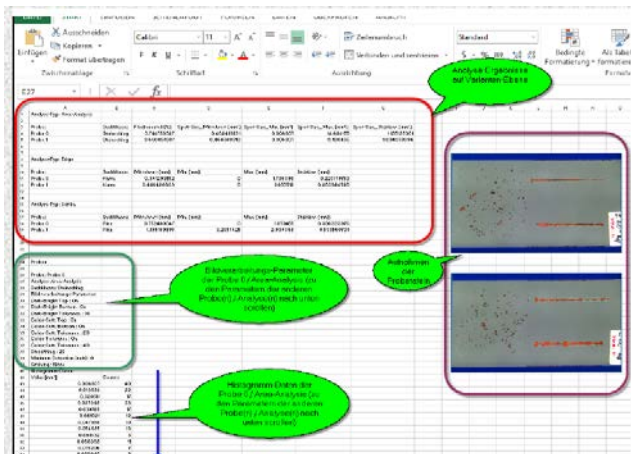
**QUANTIZ®/QUANTIZ® Light** provide an automatic evaluation and documentation of various corrosion samples.

The specially designed lighting technology enables the analysis on different contrast levels and allows specifically for filiform corrosion samples to evaluate them without manual removal of the affected paint coats.

The evaluation can be adjusted by the user in a simple manner to the requirements of the test. Possible evaluations: scribe delamination, edge corrosion and corrosion on the surface.



The results are available together with the images in a Excel format.



Compared to sheer software for image-processing, as so many available, and their necessity of additional hardware, it provides many advantages:

- Hardware-control completely integrated into software (no switching between different tools);
- Images become inserted into software automatically (no necessity of inconvenient image-import into software);

- Hardware is delivered fully calibrated, so that no calibration is more required by the user (pixel/mm, geometric-distortion);
- Hardware is compact compared to repro-units (advantageous in case of limited space);
- Image acquisition:
  - Setting may be saved for reproduction (reproducible, well defined settings)
  - Analysis-results stored together with images (completing the documentation on analysis-procedure);
- Hardware provides bright-field-illumination allowing for non-destructive analysis of Filiform-corrosion, bubbling (infiltration) and extra sensitive detection of white-rust on zinc;

## Technical Data

### QUANTIZ®

Dimensions (L x D x H) approx. 620 x 220 x 530 mm

Weight, net approx. 4.8 kg

Power supply 100 - 240 V AC, 50/60 Hz

Max. sample width 150 mm

FOV (camera) 190 x 110 mm (L x W)

### QUANTIZ® Light

Dimensions (L x D x H) approx. 500 x 500 x 800 mm

Weight, net approx. 20 kg

Power supply 100 - 240 V AC, 50/60 Hz

Max. sample high 150 mm

## Order Informations

Ord.-No.	Product-Description
0322.01.31	<b>Surface Analysis System QUANTIZ®</b> incl. Hard- and Software, dongle, USB-cable, mains cable/power supply, manual
0332.01.31	<b>Surface Analysis System QUANTIZ® Light</b> special housing with a large sample room; incl. Hard- and Software, dongle, USB-cable, mains cable/power supply, manual

The right of technical modifications is reserved.  
Group 21 - TBE QUANTIZ® / QUANTIZ® Light – IX/2020