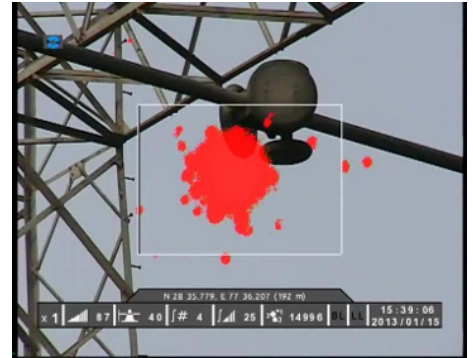


CoroCAM 8

Radiometric UV/Visible/Thermal Imaging System

Provisional Specifications - available Q3/2014.

The CoroCAM 8 is based on the CoroCAM 6D platform with a number of improvements aimed at improving the inspection capability offered. It is a replacement for the MultiCAM and as such features a high spec Sony visible camera, a FLIR thermal camera and a proprietary quantitative UV camera. The camera system features a viewfinder and LCD screen which can be switched between depending on user preference. For ergonomics it has a rotational right hand grip with interface keys laid out in such a way that the camera system can be operated by one hand. A number of short-cut keys are implemented for ease of use. The CoroCAM 8 has both a laser marker and laser rangefinder. The rangefinder is used to correct the UV intensity measured for distance. A GPS installed as standard and features an assistive external antenna.



External features:

- Rotational handle (right hand only) with primary interface keys
- LCD screen, 5.7" @ 640x480 pixels.
- Viewfinder, focusable
- Laser pointer and rangefinder with safety block off.
- Heat exchanger & fan for cooling.
- GPS with booster antenna port.
- Microphone and Speaker.
- I/O connectors.
- Tripod mount.
- Quick function keys on left.

UV & Thermographic Inspection

Both are required to get a holistic view.

Provisional Specification - final specifications may vary.

Fields of View & Resolution

@ 1x Zoom:	16° (80 pixels per degree)
@ 2x Zoom:	8° (160 pixels per degree)
@ 4x Zoom:	4° (320 pixels per degree)
@ 8x Zoom	2° (640 pixels per degree)
UV & IR channel zoom	Digital to match visible FOV.
FOV with UV overlay:	All
Focus:	Automatic or manual on visible channel, UV & IR slaved to visible or independent manually
Minimum focus distance:	2.3m

Sensitivity (typical)

Ultraviolet:	2.05x10 ⁻¹⁸ Watt/cm ²
Infrared (NEdT):	<50mK @ f1.0 (-25°C to +135°C)
Visible:	1.7 lx (F1.6, ICR off) 0.3 lx (F1.6, ICR on)

Image acquisition features

Ultraviolet:	Averaging & Integration
Infrared:	Auto flat field correction (0.5s) Auto level and span
Visible:	Auto low light, back light compensation

Display Specifications

Viewfinder:	Ventilated rubber eye cup, 640x480 pixel LED = 42" screen seen from 2m
LCD:	5.7" Backlit LCD 450cd/cm ² , 640x480 pixel
Channel Fusion:	Picture in Picture, Threshold Mask, Variable Translucency
Fusion accuracy IR & UV palettes	Better than 1 milliradian Standard IR + UV Rainbow

Camera Output

USB	Auto connect USB 2.0
HDMI	Video & Audio to screen
Ethernet	Video streaming

Interface

Ergonomic grip w/ buttons & scroll wheel:	Controls menu allowing user to set function variables
Short cut buttons:	Activate specific functions
Remote control:	Via USB or LAN cable from PC (running Windows 7 or Linux) or Android device

Image & Data Storage

Output / saved image options	As displayed, Simplified, No info overlay, Annotation overlay
Video format:	MP4 (H.264 compression) w/ audio
Image format:	Overlaid channels saved as JPEG
Separately saved	
Visible channel:	JPEG
UV channel:	JPEG
IR channel:	Radiometric JPEG
Meta-data contains:	Camera settings, GPS location, range to object, SD Card (8GB)
Storage media:	

Firmware Features

Image Series	Allows for auto sorting of images at download to PC for reporting
Numbering:	Review recorded media
Gallery & Playback:	Download latest firmware
Field Ungradable:	Power on to ready in 60s
Quick startup:	

Power

Sony Li-ion battery:	Operate camera for up to 1.5Hrs
----------------------	---------------------------------

Physical Specifications

Weight:	2.5Kg
Dimensions:	TBA
IP rating:	IP54
Operating temp:	-15°C to 55°C

Items to Order

- Basic Camera set
- Accessory Pack I - Additional battery, dual battery charger, Advanced Site Inspection Guide/ EPRI Guide & headset
- Accessory Pack II
- Training