

Important User Information

Read this document and the documents listed in the additional resources section about installation, configuration, and operation of this equipment before you install, configure, operate, or maintain this product. Users are required to familiarize themselves with installation and wiring instructions in addition to requirements of all applicable codes, laws, and standards.

Activities including installation, adjustments, putting into service, use, assembly, disassembly, and maintenance are required to be carried out by suitably trained personnel in accordance with applicable code of practice.

If this equipment is used in a manner not specified by the manufacturer, the protection provided by the equipment may be impaired.

In no event will Rockwell Automation, Inc. be responsible or liable for indirect or consequential damages resulting from the use or application of this equipment.

The examples and diagrams in this manual are included solely for illustrative purposes. Because of the many variables and requirements associated with any particular installation, Rockwell Automation, Inc. cannot assume responsibility or liability for actual use based on the examples and diagrams.

No patent liability is assumed by Rockwell Automation, Inc. with respect to use of information, circuits, equipment, or software described in this manual.

Reproduction of the contents of this manual, in whole or in part, without written permission of Rockwell Automation, Inc., is prohibited.

Throughout this manual, when necessary, we use notes to make you aware of safety considerations.



WARNING: Identifies information about practices or circumstances that can cause an explosion in a hazardous environment, which may lead to personal injury or death, property damage, or economic loss.



ATTENTION: Identifies information about practices or circumstances that can lead to personal injury or death, property damage, or economic loss. Attentions help you identify a hazard, avoid a hazard, and recognize the consequence.

IMPORTANT

Identifies information that is critical for successful application and understanding of the product.

Labels may also be on or inside the equipment to provide specific precautions.



SHOCK HAZARD: Labels may be on or inside the equipment, for example, a drive or motor, to alert people that dangerous voltage may be present.



BURN HAZARD: Labels may be on or inside the equipment, for example, a drive or motor, to alert people that surfaces may reach dangerous temperatures.



ARC FLASH HAZARD: Labels may be on or inside the equipment, for example, a motor control center, to alert people to potential Arc Flash. Arc Flash will cause severe injury or death. Wear proper Personal Protective Equipment (PPE). Follow ALL Regulatory requirements for safe work practices and for Personal Protective Equipment (PPE).

	Preface	
	Product Description.....	5
	About This Publication.....	5
	Additional Resources.....	5
	Chapter 1	
Introduction	Product Overview.....	8
	Chapter 2	
Plotter Setup	Location.....	9
	Connections.....	9
	Install the ClearTools Software.....	9
	Driver Installation.....	12
	Vista and Windows 7 Driver Installation.....	12
	Windows 8 and Windows 8.1 Driver Installation.....	13
	Windows 10 Driver Installation.....	16
	Windows XP Driver Installation.....	19
	Windows 2000 Driver Installation.....	21
	Chapter 3	
Operation	Control Panel.....	23
	ON/OFF Buttons.....	24
	Clear Buffer.....	24
	Stop-key.....	24
	Beep Off Key.....	24
	Insert the Plotter Pen Into the Pen Holder.....	24
	Place the Plates on the Plotter.....	24
	Install the Metal Inlays.....	25
	Place the Elements in the Support Plates.....	25
	Activate the Plotter with ClearTools Software.....	26
	Introduction.....	26
	Switch to Plot Mode.....	26
	Startup Options for Plot Mode.....	27
	Map to Plotter.....	27
	General Calibration.....	28
	Marker Type Adjustment.....	29
	Plotting.....	30
	Plotting Multiple Cards.....	31
	Plotting Multiple Different Cards.....	33

Troubleshooting and Maintenance	Chapter 4	
	Troubleshooting the Plotter.....	35
	Plotter Maintenance.....	36
	Cleaning Plotter.....	36
	Plotter Pen Maintenance.....	36
Specifications	Chapter 5	
	Technical and Environmental Specifications.....	37
	Instructions for Repackaging the Plotter	38

Product Description

The ClearPlot™ Basic plotter is used to produce marker cards for use on terminal blocks, wires, cables, and other industrial components. It's ideal for low- to medium-volume marking requirements.

About This Publication

The following publication provides a brief overview of how to install, operate, and maintain the ClearPlot Basic marking system.

Summary of Changes

This manual contains new and updated information as indicated in the following table.

Topic	Page
Removed base plate from Accessories table.	7

Notes:

Introduction

Check that you have received all items. Retain the specialized packaging for the plotter.

The following items are supplied as standard.

- ClearPlot™ Basic
- Plot plate
- Three stainless steel inlays
- Power supply with interchangeable adapter plug
- USB cable
- DVD with ClearTools™ software and product manuals



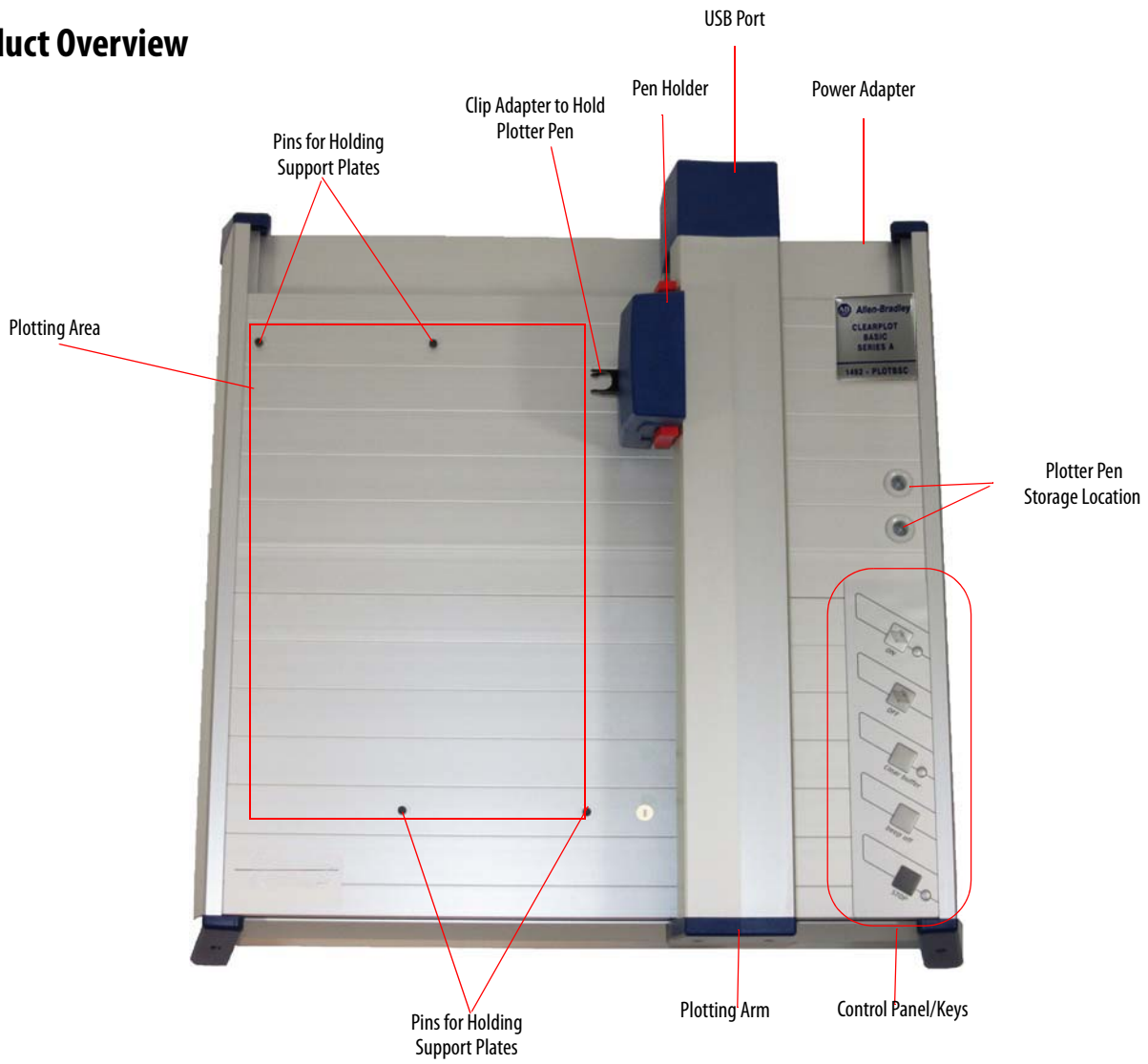
Table 1 - Accessories

Item	Cat. No.	Description
Disposable pen	1492-PLOTPEN25	Disposable ink pen with 0.25 mm (0.0098 in.) tip diameter
Disposable pen	1492-PLOTPEN35	Disposable ink pen with 0.35 mm (0.014 in.) tip diameter
Pen adapter	1492-PLOTADPT	Pen adapter for use with Sharpie™ Ultra Fine Point Pen (recommended with font size 12 pt. and above)
Plot plate	1492-PLOTBSCPLT	Plot plate for the plotter
Inlay (Qty: 3)	1492-PLOTINLAY	Stainless steel inlay plates for plotter
Plotter software	—	DVD of ClearTools Software
Single plate	1492-PLOTPLTA	Single plate that is used with wire markers, Cat. Nos.: 1492-MW5-21, -MW6-21, and -MW7-21 (not included in plotter kit)
	1492-PLOTPLTB	Single plate that is used with group marker, Cat. No. 1492-GMSX30 (not included with plotter kit)

TIP The latest ClearTools software can be downloaded at: www.ab.com/industrialcontrols/products.
Select Connection Devices > Terminal Blocks > Marking Solutions > X-Y Plotter Marking System > Software.

IMPORTANT Use only the listed accessories with the plotter. Use of other accessories can damage the plotter.

Product Overview



Plotter Setup

This chapter contains information on the plotter location, connections, software installation, and driver installation.

Location

A dry, dust-free room is the ideal environment for the plotter. If possible, do not install the device in a damp or dusty area. Do not expose the system to direct sunlight. Check that the connections on the device are accessible. Position the ClearPlot™ Basic firmly on the work surface where it is to be used, verifying it is level.

Confirm that the writing arm can move freely and is not obstructed by other objects.

Connections

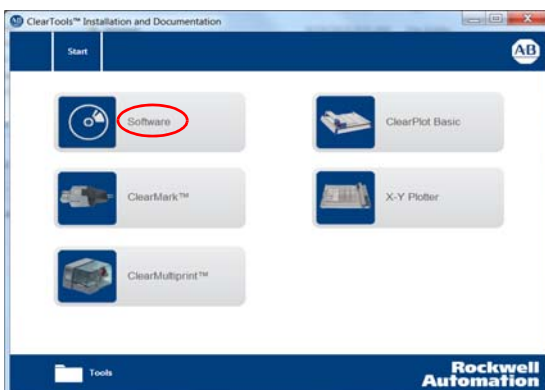
Plug the device into a correctly installed power socket with the included power supply.

The power supply features a variable AC input voltage of 100...240V AC, 50/60Hz. Plug the connector from the output cable on the power supply into the back, right-hand side of the plotter.

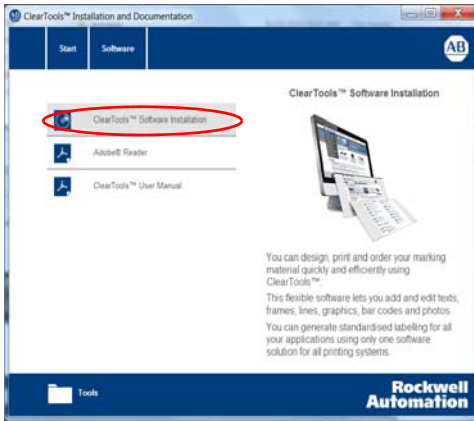
Then hook up the device with the provided USB cable. The respective ports are on the top side of the plotter near the Allen-Bradley® product label.

Install the ClearTools Software

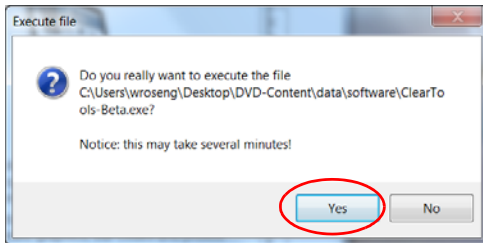
1. Load the ClearTools™ software DVD.
2. Click Software.



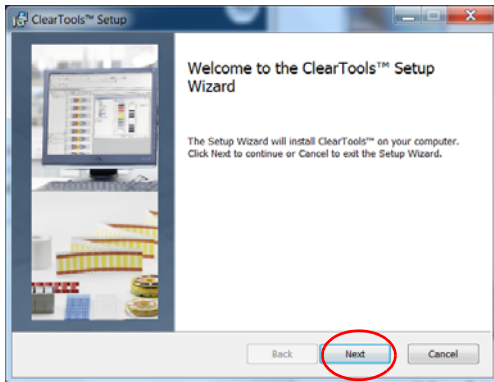
3. Click ClearTools Software Installation.



4. Click Yes.



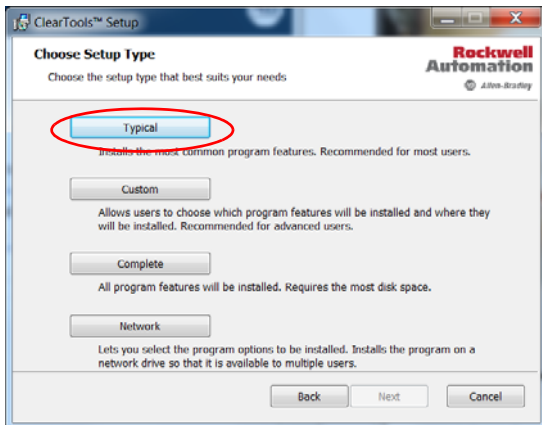
5. Click Next.



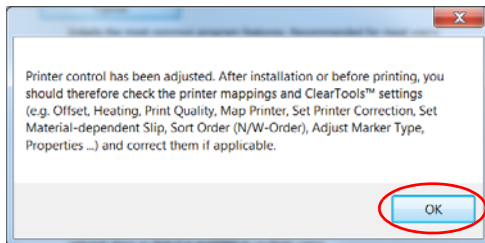
6. Accept the terms and click Next.



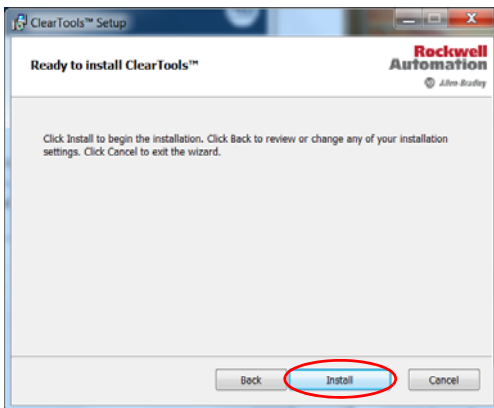
7. Click Typical.



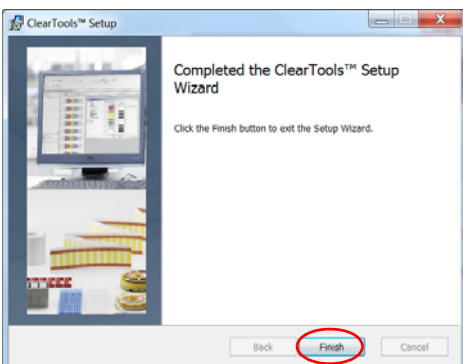
8. Click OK.



9. Click Install.



10. Click Finish.



Driver Installation

These instructions outline how to install the driver for your plotter with the psetup installation package.

The package consists of the folder Psetup_..., which contains psetup.exe, the executable, and support folders and files for setup.

You have received this package on the DVD, together with a new machine, or have downloaded the package as a packed file from the Internet. If you have downloaded this file, be sure to unpack the package and store it locally on your personal computer.

The driver is compatible with the Windows versions 2000, XP, Vista, 7, 8, 8.1 and 10. Before starting the installation, read the detailed instructions for the corresponding operating system of your personal computer.

Vista and Windows 7 Driver Installation

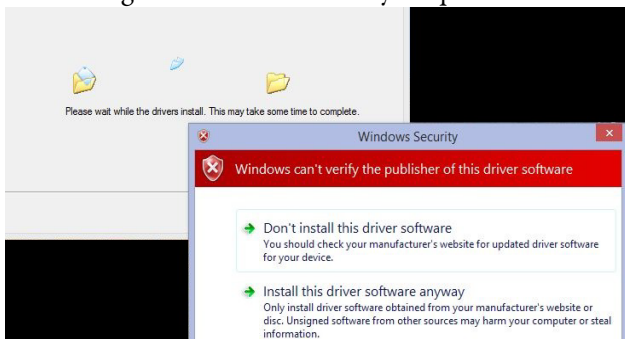
To install the plotter driver for the Vista and Windows 7 operating system, follow these steps.

1. Connect the plotter to your computer.
2. Turn on the power (recommended).
3. Open the folder named Psetup.
4. Start the program psetup.exe.

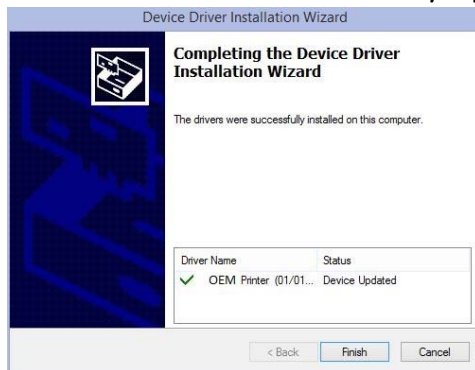
If you have not signed in as an administrator, you are prompted for an administrator account and password. The Device Driver Installation Wizard dialog box appears.

5. Click next to begin the driver installation.

The message ‘Windows can’t verify the publisher of this driver software’ appears.

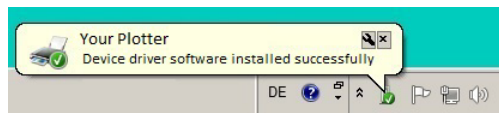


- Click 'Install this driver software anyway'.



- Click Finish to complete the driver pre-installation process.

TIP If you have not switched on your plotter yet, it is best to do it now. When the plotter is switched on the first time, Windows completes the driver installation automatically. After completion, a taskbar bubble appears.



If you do not switch on your plotter now, the driver installation is completed on first use.

Windows 8 and Windows 8.1 Driver Installation

To install the plotter driver for the Windows 8 and Windows 8.1 operating system, follow these steps.

- Connect your plotter to your computer.
- Turn on the power (recommended).
- Open the folder named Psetup.
- Start the program psetup.exe.

If you have not signed in as an administrator, you are prompted for an administrator account and password.

The window that is shown appears giving you instructions for installing the driver.



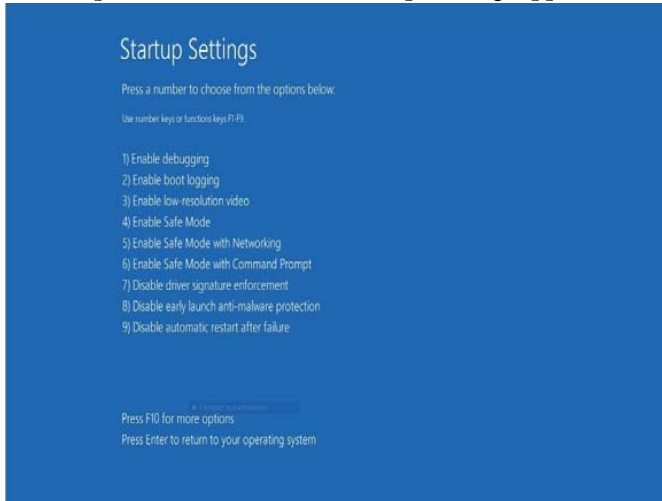
- Click OK.



6. Click Yes to restart immediately or No to continue the installation later.

To continue the installation, you must restart your computer and sign in as an administrator.

Upon restart, the menu Startup Settings appear.



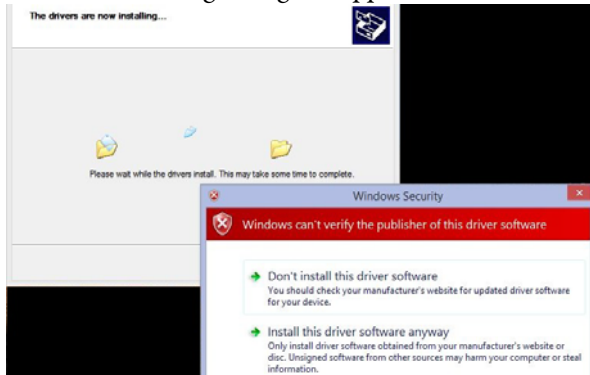
7. Choose option 7: Disable driver signature enforcement by pressing the 7 or F7.
8. Sign in with your administrator account (the same account that is used when calling psetup.exe).

After signing in, the Device Driver Installation Wizard starts automatically.



9. Click Next to start the driver installation.

The following dialog box appears.



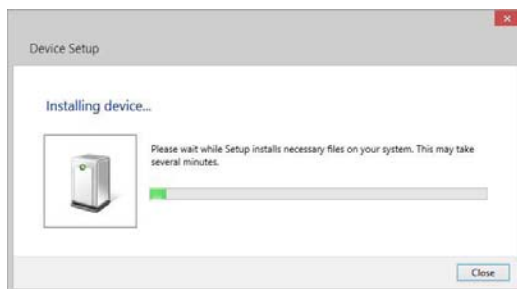
10. Click Install this driver software anyway.



11. Click Finish to complete the driver pre-installation process.

TIP If you have not switched on your plotter yet, it is best to do it now. When the plotter is switched on the first time, Windows completes the driver installation automatically. After completion, a taskbar bubble notification appears.

12. Check the progress of your installation by clicking the task bar bubble.

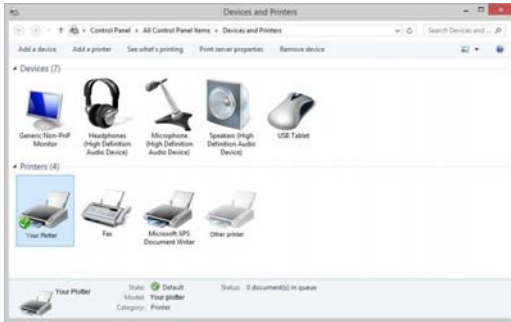


The symbol and message window will disappear after the installation is completed.

If you do not switch on your plotter now, the driver installation is completed on first use.



To check the success of the installation, go to Devices and Printers under the control panel. Verify the plotter is in the list of printers.



Windows 10 Driver Installation

1. Connect your plotter to your computer and turn on the power (recommended).
2. Open the folder named Psetup_... and start the program psetup.exe.
3. If you have not signed in as an administrator, you are prompted for an administrator account and password.
4. The window that is shown appears giving you instructions for installing the driver (described here in detail).



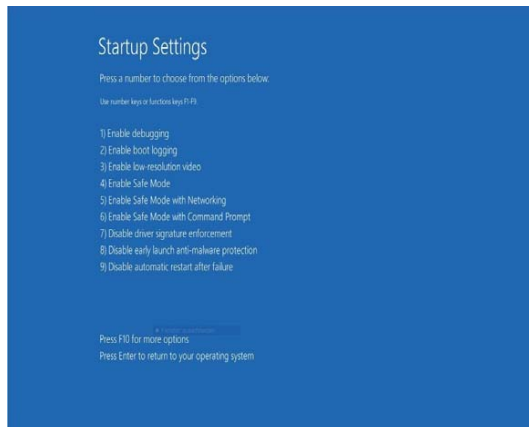
5. Click OK.



6. Click Yes to restart immediately or No to continue the installation later.

To continue the installation, you must restart your computer and sign in as an administrator.

Upon restart, the Startup Settings appear.



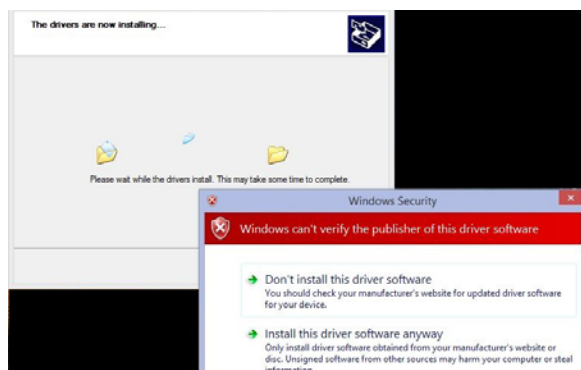
7. Choose the option: Disable driver signature enforcement by pressing 7 or F7.
8. Sign in with your administrator account (the same account that is used when calling psetup.exe).

After signing in, the Device Driver Installation Wizard starts automatically.

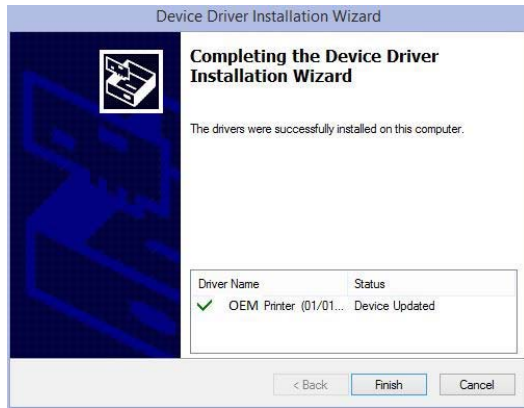


9. Click Next to start the driver installation.

The following screen appears.



- Click Install this driver software anyway.

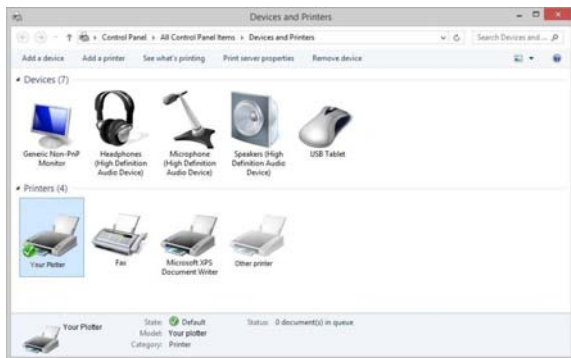


- Click Finish to complete the driver pre-installation process.
- Switch on the Plotter if you have not already.

Windows then completes the driver installation automatically without notice. It can take up to 30 seconds until the driver is ready for use. If you do not switch on your plotter now, the driver installation is completed on first use. In this case, switch on your plotter when the windows login is completed (or recycle the power of your plotter after signing in).

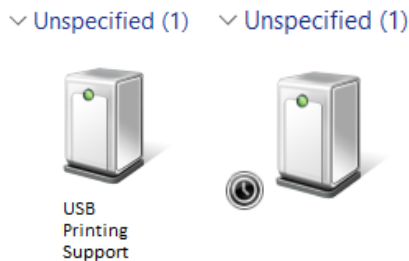
To check for a successful installation, follow these steps.

- Go to Control Panel <Devices and Printers under the control panel, verify that your plotter is listed under printers.



If the driver installation was not successful or incomplete, the entry USB Printing Support is displayed in the category Unspecified of Devices and Printers.

When the installation is still in progress, the icon is displayed with a clock beside it.



Windows XP Driver Installation

1. Log in as an administrator.
2. Open the Folder Psetup.
3. Start the program psetup.exe.

A message window reminds you to keep the plotter switched off.



4. Click OK to start the pre- installation.

During the installation of the plotter software, the following dialog box appears.



5. Click Continue Anyway.

When the pre-installation is finished, you are notified that you can now connect and switch on your plotting or engraving device.



6. Click OK.

- 7. Connect the plotter to your computer and switch on.

The Found New Hardware Wizard starts and the following dialog box appears.



- 8. Click No, not this time.

- 9. Click Next.



- 10. Click Install the software automatically (Recommended).

- 11. Click Next.



- Click Continue Anyway.



- Click Finish to complete the driver installation.

The plotter can now be used. You can sign in with your user account.

Windows 2000 Driver Installation

- Sign in as an administrator.
- Open the Folder Psetup and start the program psetup.exe
- A message window reminds you to keep the plotter switched off.



- Click OK to start the pre- installation.

During the installation of the plotter software, the following dialog box appears.



- Click Yes.

When the pre-installation is finished, you are notified that you can now connect and switch on your plotting or engraving device.

6. Click OK.
7. Connect the plotter to your computer and switch it on.

The Digital Signature Not Found dialog box appears again.



8. Click Yes.

The plotter can now be used. You can sign in with your normal user account.

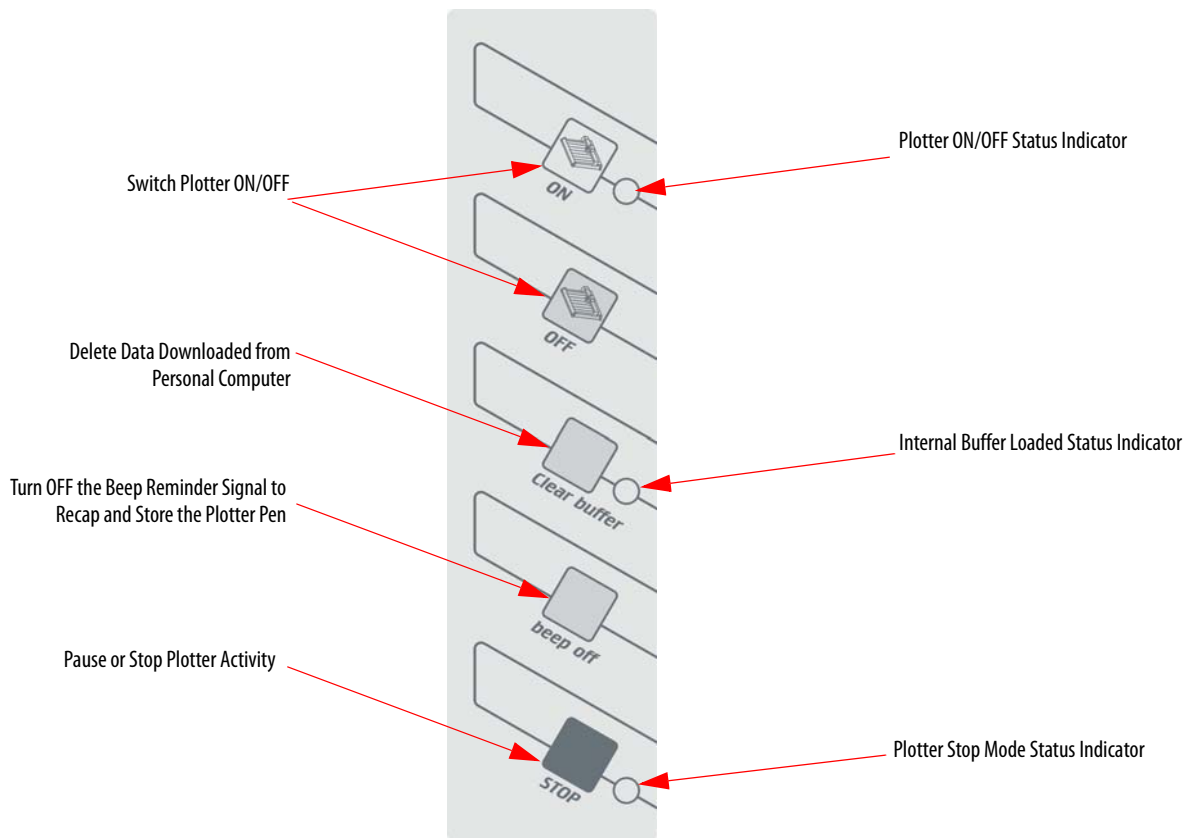
Operation

Once you have installed the ClearPlot™ Basic and connected the power supply and USB cable, you can switch on the plotter.

IMPORTANT Before switching the device on, check that there are no objects on the writing/plotting area that inhibit the writing arm from moving freely.

Control Panel

All settings and commands are entered using the control panel.



ON/OFF Buttons

The ON/OFF buttons are used to activate and deactivate the device. When the plotter is switched on, the writing arm moves to the top right-hand corner of the labeling area and auto calibration takes place. The green light comes on when the system is ready for use and to receive data from the personal computer.

Clear Buffer

If the ClearPlot Basic contains data the yellow light comes on. You can delete this data by pressing the Clear buffer key. To clear the buffer, the system must be in stop mode (red light on).

Stop-key

If the stop-key is activated while the plotter is in action, the job pauses immediately and the pen holder moves into the top right-hand corner. The red light signals the interruption. Pressing the key again calibrates the writing arm and the plotter continues with the job. The red light goes out.

Beep Off Key

After completion of the print job, an acoustic signal (beep) notifies the user to take the pen out of the pen holder and recap. The signal repeats continuously after 20 seconds and can be turned off by using the beep off key.

To turn off the signal first power of the plotter by selecting of off button. Next, press Clear Buffer and beep off together and press ON to start the plotter.

To reactivate the signal, use the same sequence.

IMPORTANT The pen clogs and dries up if it remains uncapped in the pen holder

Insert the Plotter Pen Into the Pen Holder

Before using the ClearPlot Basic, insert the plotter pen with the desired tip width into the clip adapter of the pen holder.

IMPORTANT Before starting the plot, select the pen with the desired tip width and make sure to prime the pen on a plastic surface. Insert the pen directly into the pen holder.

The plotter recalibrates before first plotting.

Place the Plates on the Plotter

There are four pin stops on the plotting area where up to three different support plates can be loaded. Different support plates are available depending on the size of the marking elements.

Install the Metal Inlays

1. Align the number on the inlay with the notched locator on the base plate.
2. Slide right side of marker card under ledge on plotter plate.
3. Line-up first notch on the left side of the marker card to the notch on the plotter plate.
4. Press the left side on the marker card down on to the plotter plates.



Inlay Installation onto Plate



Marker Card Installation onto Plate

Marker Card	Inlay
1492-MW5-21	Inlay is needed
1492-MW6-21	No inlay needed
1492-MW7-21	No inlay needed

Table 2 - Inlay Spacer Requirement Using Special Plate, 1492-PLOTPLTB

Marker Card	Inlay
1492-GM5X30	No inlay needed

Place the Elements in the Support Plates

Choose the appropriate support plate for the elements to be labeled and insert the elements carefully into the support plate. You can also add the elements first and then place the support plate on the plotter.

IMPORTANT The plotter always recalibrates before first plotting.

Activate the Plotter with ClearTools Software

Introduction


This chapter describes the setup, activation, mapping/calibration of the plotter to the printed marker cards, and plotting options while using ClearTools™.

Switch to Plot Mode

Before you can plot with ClearTools, the software must be put into Plot Mode

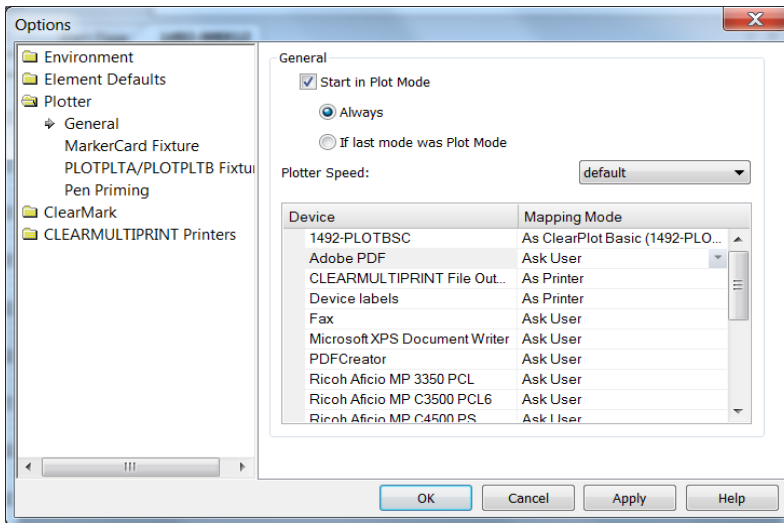
1. Click the icon on the toolbar, or go to File and select Toggle Plot Mode



IMPORTANT Plot mode is active when Plot Mode is written next to the version number or when the following icon in the toolbar appears depressed: 

Startup Options for Plot Mode

1. The display in Plot Mode can be configured with the Options window (select Tools > Options > Plotter).

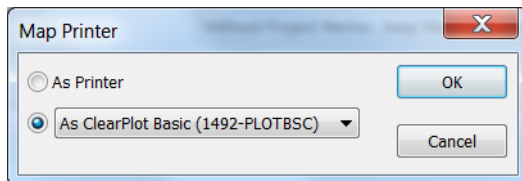


IMPORTANT Activate the Start in Plot Mode checkbox if Plot Mode is to be launched in the program after a restart, when opening an application-file or when creating a project. Pcard, the card must be calibrated and mapped to the plotter.

Map to Plotter

1. After you have filled out your card as desired, go to File-> Print.
2. Select the plotter (1492-PLOTBSC) in the Printer pull-down menu.
3. Click Map on the print screen.

The Map Printer dialog box appears.

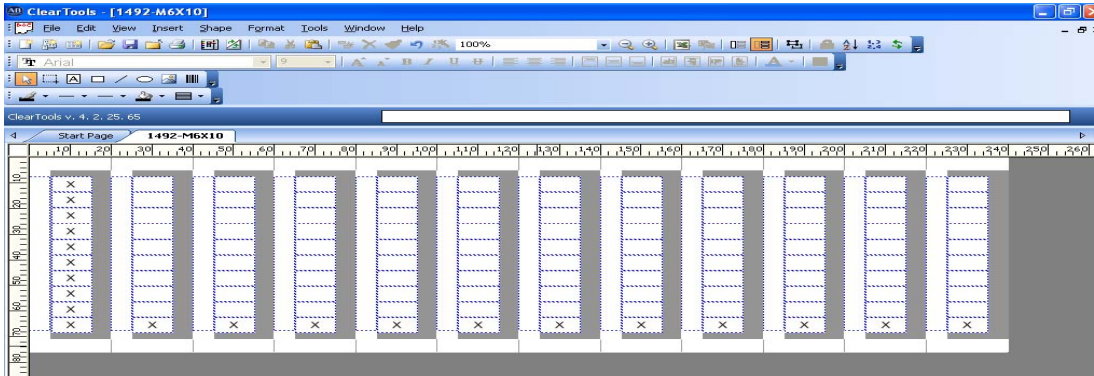


IMPORTANT Each time a new card is selected it needs to be mapped to the plotter

4. Click 'As ClearPlot Basic (1492-PLOTBSC)'
5. Click OK.

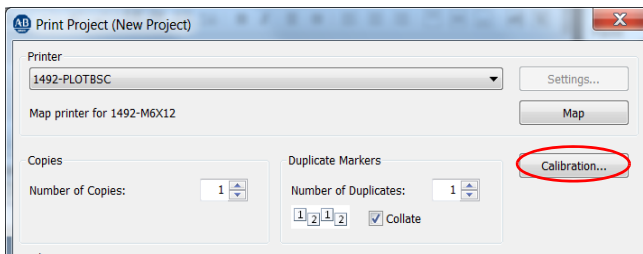
General Calibration

To check the plotter calibration, plot a card with a row of Xs going vertically down the marker tags, and with a row going horizontally across the marker tags.

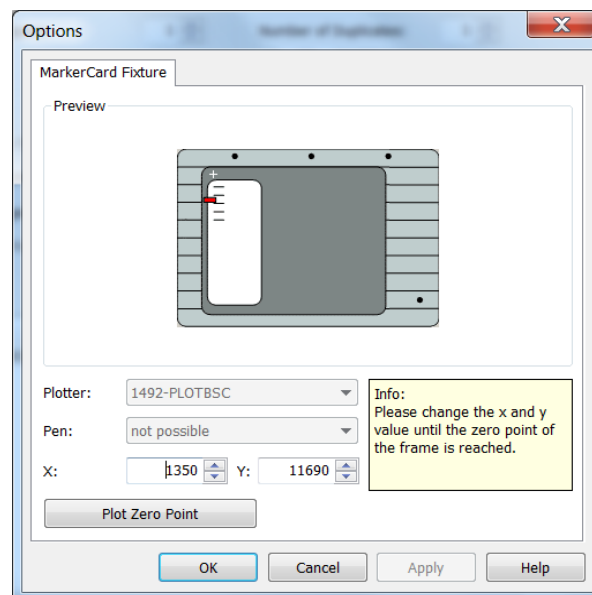
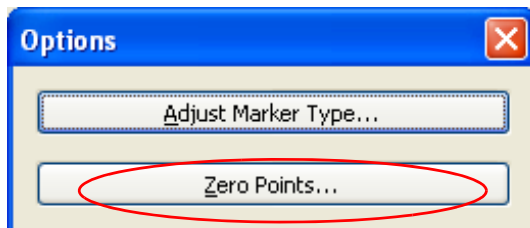


- If the Xs are centered on all tags, do not change any calibration settings and move onto plotting your cards.
- If the Xs are not centered, follow these steps.

1. Go to File to Print and Click Calibration.



2. Click Zero Points.



3. Place a piece of tape over the engraved + on the upper left corner of the plotter; this is your ideal Zero Point.
4. Click Plot Zero Point and watch where on the tape the plotter draws a + in relation to the engraved one on the plotter.

5. If the plotted + is above or below the engraved one, adjust the Y setting, if it is to the right or left, adjust the X setting.
 - Increasing X value: Moves the + to the right.
 - Decreasing X value: Moves the + to the left.
 - Increasing Y value: Moves the + up.
 - Decreasing Y value: Moves the + down.

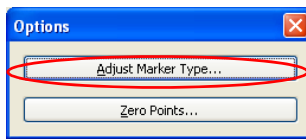
IMPORTANT Suggested increment of change: 5.0

6. Continue adjusting the settings until the Zero points match, then reprint the test card and determine if the calibration is correct.

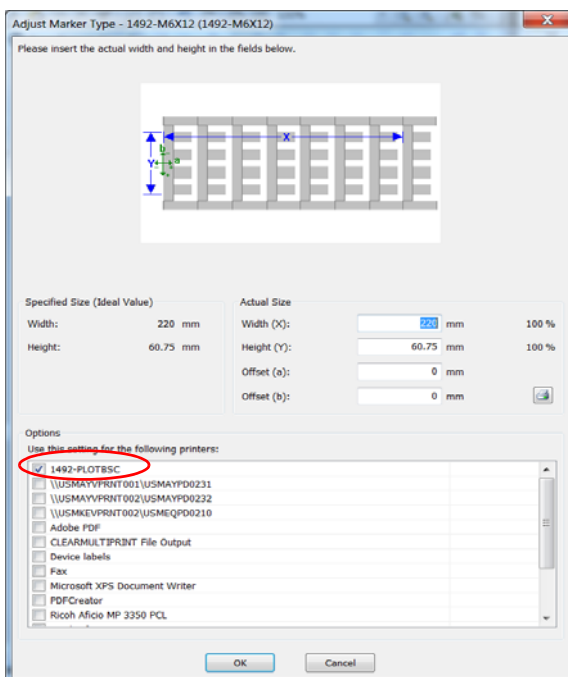
Marker Type Adjustment

If you are satisfied with your calibration, move onto the Plotting section. If calibrating the Zero Point is not effective on a card type, follow these steps.

1. Choose File > Print > Calibration and Click Adjust Marker Type.

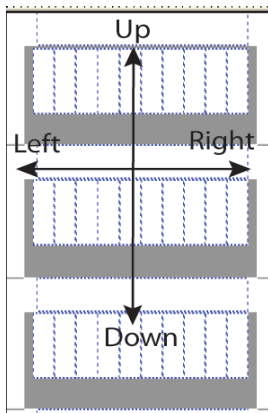


The Adjust Marker Type dialog box appears.



2. Verify that the plotter is selected under Options.

3. Use the Offset X and Offset Y values to adjust the single cards calibration.
 - Increase Offset X: Text moves down.
 - Decrease Offset X: Text moves up.
 - Increase Offset Y: Text moves left.
 - Decrease Offset Y: Text moves right.



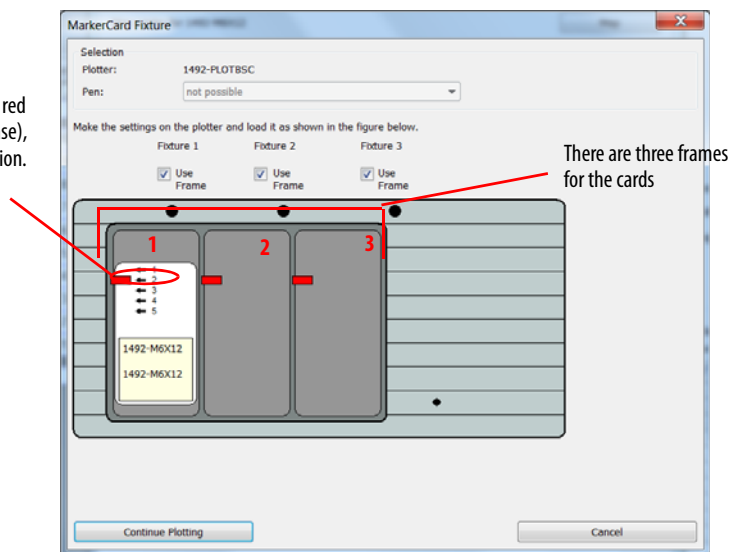
IMPORTANT Suggested increment of change: 0.5 mm (0.002 in.). The directions are based on a vertical card as placed on the plotter.

Plotting

1. To plot a card, fill out the card as desired.
2. From the File menu, choose Print.
3. Click Print.

The MarkerCard Fixture dialog box appears.

The number next to the red bar (position 2 in this case), indicates the inlay position.



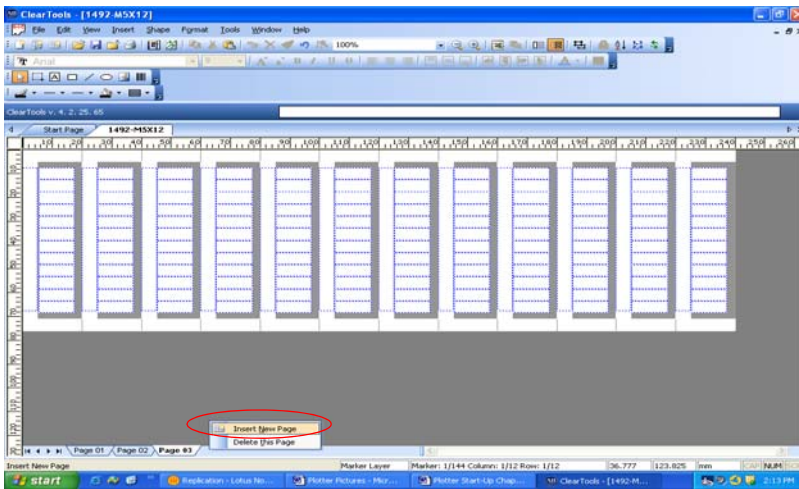
4. Verify that the inlay is in the correct position and that the card is on the right frame.
5. If they are all correct, click Continue Plotting.

Plotting Multiple Cards

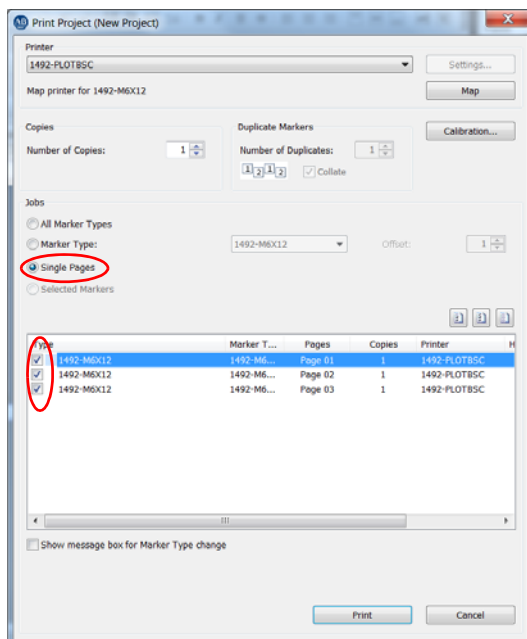
Multiples of the same card and multiple different cards can both be plotted in the same print session.

To plot multiples of the same card, follow these steps.

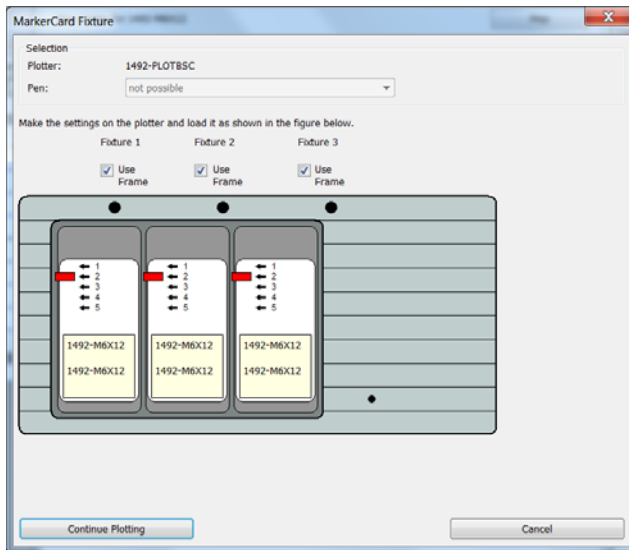
1. To create multiple pages of a marker card, right-click the bottom tab strip in ClearTools and click Insert New Page.



2. Fill the multiple pages as desired. Each page can be treated as another Marker Card.
3. From the File menu, choose Print.
4. Choose Single Pages and Check the desired label type page.



5. Click Print.



6. Verify that the inlay positions are correct.

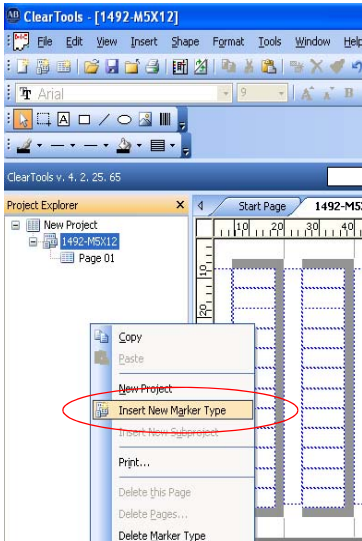
7. Click Continue Plotting.

-
- IMPORTANT**
- If you do not want to print three marker cards, or wish to skip a frame, deselect the Use Frame checkbox that is located above each frame. Any frames that are not selected are not plotted.
 - When plotting more than three cards in a plot job, multiple Marker Card Fixture windows appear. Click Continue Plotting on the first window. Do not select continue plotting on the second window until the first batch of marker cards are plotted and you have put new marker cards into the frames.
-

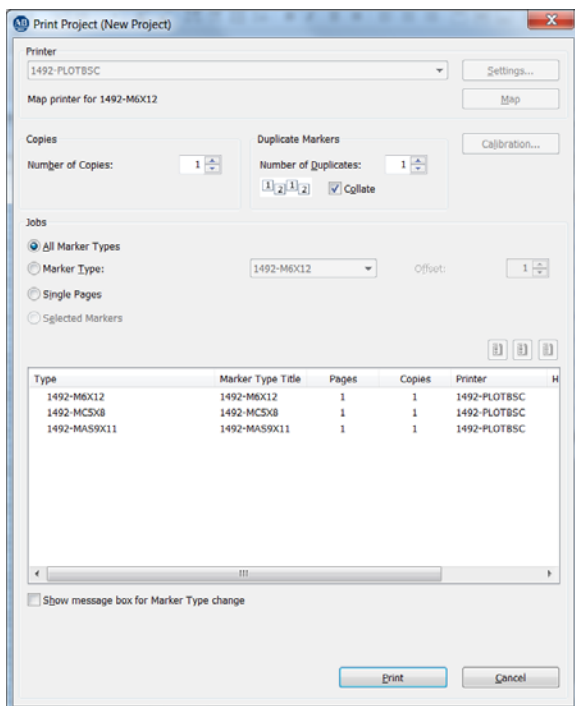
Plotting Multiple Different Cards

To plot multiples of different cards, follow these steps.

1. In the Project Explorer window, right-click and select Insert New Marker Type to create multiple cards.

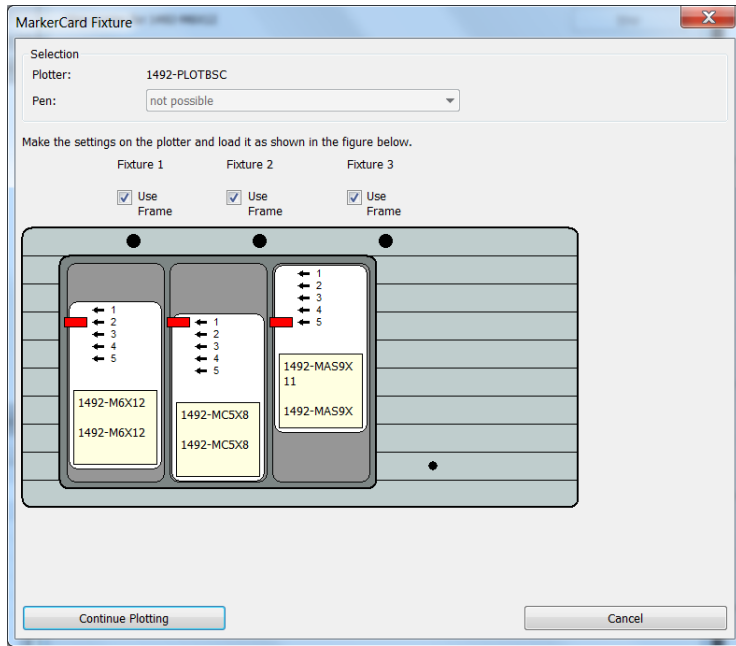


2. Fill the cards as desired.
3. From the File menu, choose Print.



All cards must be mapped to the plotter. To map cards that are all different to the plotter, follow these steps.

1. Click a card.
2. Select the plotter from the pull-down menu.
3. Click Map.
4. Click Print.



5. Verify that the inlay positions are correct and that the marker cards are in the correct frame locations.
6. Click Continue Plotting.

Troubleshooting and Maintenance

This chapter contains information on how to troubleshoot the plotter and perform routine maintenance.

Troubleshooting the Plotter

[Table 3](#) lists the most common operating problems, probable causes, and steps to correct the problem. If you encounter a problem that is not listed in the table, contact Rockwell Automation® Technical Support at (440) 646-3434, options: 3, 2, 4, 2, 5.

Required Equipment

A voltmeter is required for verifying that the correct voltage is supplied to the plotter. The voltmeter is also required for verifying the correct communications cable configuration.

Table 3 - Troubleshooting

Problem	Probable Causes	Corrective Actions
Plotter does not power up.	Plotter is not plugged in. Improper connection to the power source.	Verify that plotter is plugged in. Verify 110/220V AC, 50/60 Hz voltage at power source.
No communications between plotter and computer.	Faulty communications cable. Wrong COM or USB port is selected. USB is plugged in upside down.	<ol style="list-style-type: none"> 1. Check the cable connections. 2. Verify that cable is plugged into the COM or the USB port that is selected in the ClearTools™ software. If steps 1 and 2 do not restore communications, follow these steps. <ol style="list-style-type: none"> 1. Turn off the plotter. 2. Disconnect the communications cable, 3. Restart the computer. 4. Connect the communications cable. 5. Turn on the plotter. 6. Start the ClearTools software.
Plotter does not properly align text on markers.	The Plotter is not calibrated correctly.	Check that the plotter is calibrated as described in the ClearTools Software User Manual, publication 1492-UM009 .
Marker text quality is poor.	Defective marker pen or the pen is out of ink. Incorrect inlay placement. Plotting speed is too fast.	<ol style="list-style-type: none"> 1. Replace the marker pen. 2. Check inlay installation, Refer to Install the Metal Inlays on page 25 3. Reduce plotting speed. If steps 1...3 do not improve the text quality, contact technical support at (440) 646-3434.

For any other problems, call Technical Support at (440) 646-3434.

Plotter Maintenance

IMPORTANT Do not use harsh products to clean the plotter. Never lubricate the mechanical parts of the plotter.

The plotter has several sliding surfaces. These surfaces do not require any lubrication. However, dust and lint can adversely affect plotter performance. Use a dust cover to keep the plotter as clean as possible.

Cleaning Plotter

If necessary, clean the plotter with a dry, lint-free cloth, or a mild cleaning solution. Do not use abrasives.

Plotter Pen Maintenance

The plotter pen (catalog numbers 1492-PLOTPEN25 and 1492-PLOTPEN35) must be removed from pen holder on the plotter, capped tightly and stored in the provided pen holder or the holder station on the plotter.



At the end of its life, this equipment should be collected separately from any unsorted municipal waste.

EEE Yönetmeliğine Uygundur. (In Conformity with the EEE Regulation).

Specifications

Technical and Environmental Specifications

Attribute		1492-PLOTBSC
Plotting area, max		273 mm x 305 mm (10.8 x 12.0 in.)
Plotting speed with pen, max		40 mm/s (1.575 in./s)
Plotter pens		Cat. Nos. 1492-PLOTPEN25 and 1492-PLOTPEN35
Ports		USB Level 2.0
Power supply	Description	Separate power supply with interchangeable adapter plug
	Input voltage	100...240V AC, 50/60 Hz
	Input current, max	0.7 A
	Output voltage	24V DC
	Output current, max	1.25 A
Temperature, operating		10...35 °C (50...95 °F), 35...75 % relative humidity
Temperature, nonoperating		-10...+50 °C (14...122 °F), 10...90 % relative humidity
Safety certificate		EN 60950-1
Interference safety compliance		EN 55022 B, EN 61000-4-2, EN 61000-4-3, EN 61000-4-4, EN 61000-4-5, EN 61000-4-6
Dimensions		470 x 480 x 155 mm (18.5 x 18.9 x 6.1 in.)
Weight		6.3 kg (13.9 lb)

Instructions for Repackaging the Plotter



Additional Resources

These documents contain additional information concerning related products from Rockwell Automation.

Resource	Description
ClearTools Software User Manual, publication 1492-UM009	Provides installation and user information for ClearTools™ Software
Product Certifications website, rok.auto/certifications .	Provides declarations of conformity, certificates, and other certification details.

You can view or download publications at <http://www.rockwellautomation.com/global/literature-library/overview.page>. To order paper copies of technical documentation, contact your local Allen-Bradley distributor or Rockwell Automation sales representative.

Rockwell Automation Support

Use the following resources to access support information.

Technical Support Center	Knowledgebase Articles, How-to Videos, FAQs, Chat, User Forums, and Product Notification Updates.	https://rockwellautomation.custhelp.com/
Local Technical Support Phone Numbers	Locate the phone number for your country.	http://www.rockwellautomation.com/global/support/get-support-now.page
Direct Dial Codes	Find the Direct Dial Code for your product. Use the code to route your call directly to a technical support engineer.	http://www.rockwellautomation.com/global/support/direct-dial.page
Literature Library	Installation Instructions, Manuals, Brochures, and Technical Data.	http://www.rockwellautomation.com/global/literature-library/overview.page
Product Compatibility and Download Center (PCDC)	Get help determining how products interact, check features and capabilities, and find associated firmware.	http://www.rockwellautomation.com/global/support/pcdc.page

Documentation Feedback

Your comments will help us serve your documentation needs better. If you have any suggestions on how to improve this document, complete the How Are We Doing? form at http://literature.rockwellautomation.com/idc/groups/literature/documents/du/ra-du002_-en-e.pdf.

Rockwell Automation maintains current product environmental information on its website at <http://www.rockwellautomation.com/rockwellautomation/about-us/sustainability-ethics/product-environmental-compliance.page>.

Allen-Bradley, ClearPlot, ClearTools, Rockwell Automation, and Rockwell Software are trademarks of Rockwell Automation, Inc. Trademarks not belonging to Rockwell Automation are property of their respective companies.

Rockwell Otomasyon Ticaret A.Ş., Kar Plaza İş Merkezi E Blok Kat:6 34752 İçerenköy, İstanbul, Tel: +90 (216) 5698400

www.rockwellautomation.com

Power, Control and Information Solutions Headquarters

Americas: Rockwell Automation, 1201 South Second Street, Milwaukee, WI 53204-2496 USA, Tel: (1) 414.382.2000, Fax: (1) 414.382.4444

Europe/Middle East/Africa: Rockwell Automation NV, Pegasus Park, De Kleetlaan 12a, 1831 Diegem, Belgium, Tel: (32) 2 663 0600, Fax: (32) 2 663 0640

Asia Pacific: Rockwell Automation, Level 14, Core F, Cyberport 3, 100 Cyberport Road, Hong Kong, Tel: (852) 2887 4788, Fax: (852) 2508 1846

Publication 1492-QS004B-EN-P - November 2018

Supersedes Publication 1492-QS004A-EN-P —November 2016

Copyright © 2018 Rockwell Automation, Inc. All rights reserved. Printed in the U.S.A.